

COOPERATIVE CONNECTIONS



Antler Shed Hunting

**Shed Hunter Kelly
O'Bryan**

Pages 8-9

Artificial Intelligence

Pages 12-13

Facing the Future Together: Understanding Power Costs and What's Ahead



Robert Raker
CEO/GM

At West River Electric, our mission is simple: to serve our members' best interest. It's also our duty to deliver safe, reliable electricity at the lowest possible cost to our members. That job is becoming more complex as we face shifts in the power market, growing energy demand, and evolving regional regulations. 4587800

We want to give you a transparent look at what's happening behind the scenes — especially with our wholesale power provider, Basin Electric — so that you're not caught off guard as changes unfold.

A Decade of Stability, But Change is Coming

For nearly ten years, Basin Electric's wholesale power rates have remained steady. That kind of rate stability is rare in today's economy. But this long pause in rate increases, combined with rising energy demand and aging infrastructure, has created financial pressure across the system.

At a recent summer managers conference, Basin shared that it is proposing a **wholesale rate increase effective January 1, 2026**. While the details are still being finalized, the primary goal is to position our generation and transmission system for the future — without compromising reliability.

What's Driving the Shift?

1. Delayed Investment in Generation

Between 2018 and 2024, Basin added only one small 45 MW power plant—while demand grew by over 40%. That imbalance is unsustainable. Now, Basin must catch up with new generation projects to ensure there's enough capacity, especially during high-demand seasons.

2. Stricter Reliability Standards

Basin is part of the Southwest Power Pool (SPP), which recently tightened its rules for power reserves. Translation? More dispatchable generation is required, and quickly because they have overbuilt the system with non-dispatchable generators like wind. That comes with major costs.

3. Dakota Gasification Company (DGC) Losses

DGC was originally developed to diversify revenues and hedge market risk, but it continues to operate at a loss because of lower natural gas prices. That financial burden adds pressure to the cooperative system.

4. Access to Affordable Financing

To fund the billions in planned capital investments, Basin needs to maintain strong financial ratios. These ratios affect how much it costs to borrow money—and that impacts all of us.

Investing in the Future

The proposed rate increase would help Basin fund critical projects like:

- New natural gas peaking plants to meet growing demand
- Transmission upgrades, including a 345kV line through Western South Dakota
- Improved reliability and reserve margins

WREA's Position: Advocating for You

At West River Electric, we don't control wholesale power rates—but we do advocate for your interests every step of the way. We're pushing for fairness, transparency, and efficiency as these decisions unfold.

We're also working behind the scenes to reduce the impact of any future rate adjustment. That means exploring local solutions, improving our load factor, and managing expenses wisely.

What's Next?

The Basin Board of Directors will vote on the proposed rate increase in the upcoming months. If approved, it would likely take effect in January 2026. Between now and then, we'll continue to keep you informed.

The landscape is changing, but so is our approach. We're committed to preparing West River Electric—and our members—for a resilient and affordable energy future.

As always, thank you for your trust and your membership.

Robert Raker | CEO

COOPERATIVE CONNECTIONS

WEST RIVER ELECTRIC

(USPS No. 675-840)

Our Mission:

To serve our members' best interest.

Our Vision:

We will be a high performing co-op.

Our Values:

1. Safety
2. Accountability
3. Integrity
4. Innovation
5. Commitment to Community

This institution is an equal opportunity provider and employer.

Board President: Andy Moon

Board of Directors

Stan Anders – Vice President
 Jamie Lewis – Secretary
 Chuck Sloan – Treasurer
 Larry Eisenbraun
 Peter Blake
 Marcia Arneson
 Steven Edoff
 Sue Peters

CEO and General Manager:

Robert Raker –
 robert.raker@westriver.coop

Editor

Amanda Haugen –
 amanda.haugen@westriver.coop

WEST RIVER ELECTRIC COOPERATIVE CONNECTIONS is the monthly publication for the members of West River Electric Association. Members subscribe to *Cooperative Connections* as part of their electric cooperative membership for \$6 a year. West River Electric Cooperative Connections purpose is to provide reliable, helpful information to electric cooperative members on matters pertaining to rural electrification and better living. Nonmember subscriptions are available for \$12 per year. Periodicals Postage paid at Wall, S.D., and at additional mailing offices. Postmaster: Send address changes to West River Electric Cooperative Connections, PO Box 412, Wall, SD 57790-0412.

Other correspondence to: West River Electric Cooperative Connections, 3250 E Hwy 44, Rapid City, SD 57703; telephone (605)393-1500, Exts. 6564, 6531 or 6522; fax (605)393-0275; e-mail amanda.haugen@westriver.coop.

Saving Energy During Peak Times Benefits All



Amanda Haugen
 Communications
 Specialist

Conserving electricity during peak energy use times not only lowers your monthly bill—it can benefit our entire community. “Peak times” refer to periods of the day when the demand for electricity is highest. Think early mornings when people are getting ready for work or school and evenings when families return home, cook dinner and unwind with electronics. When everyone uses energy at once, it adds pressure on the electric grid. 11362100

West River Electric works around the clock to ensure that electricity flows to your home whenever you need it.

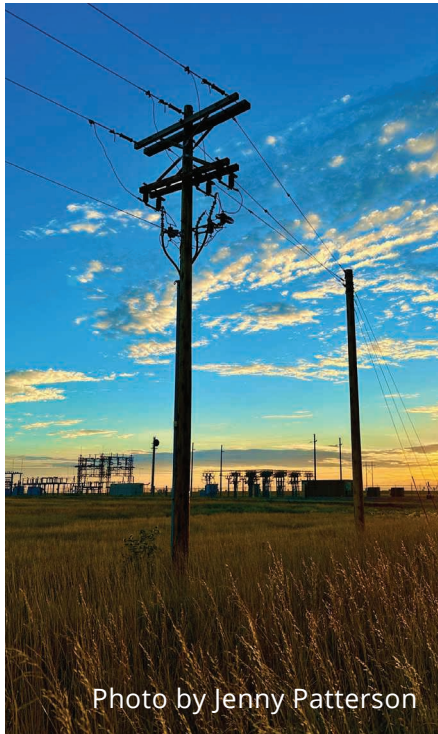


Photo by Jenny Patterson

Behind the scenes, an enormous and intricate system is at work—one of the most complex machines in the world: the U.S. power grid. The grid is made up of three major interconnections that span the country, each managing supply and demand through regional authorities to keep the lights on and our economy running smoothly.

Electricity comes from a diverse mix of sources—hydropower, natural gas, coal, solar, wind and more. Some power plants can respond quickly to spikes in demand, while others are less flexible. Once energy is generated, it travels through high-voltage transmission lines to local utilities, like West River Electric, which then delivers it to your home or business through distribution power lines.

When electricity demand surges during peak times, it's more expensive to generate or purchase power. If supply can't keep up, the risk of outages increases. That's why using less energy during peak hours is more important than ever. It not only eases strain on the grid but also helps you save money.

So how can you “beat the peak”? Start by adjusting your thermostat a few degrees during peak hours. Smart thermostats can automate this for you. Delay using energy-hungry appliances like ovens, clothes washers and dishwashers until later in the evening. Charging your electric vehicle overnight instead of right after you get home can also help.

Small actions taken by many households can lead to big results. When we all work together to reduce energy use during peak times, we protect our power grid, help control costs and ensure reliable electricity for our communities.

Emergency Preparedness: Are You Ready for a Disaster?

Source: National Safety Council

National Preparedness Month, sponsored by the Federal Emergency Management Agency and held annually in September, is a good reminder that natural and man-made disasters can strike at any time. It's important to have a planned response when you're at work, on vacation or on the road.

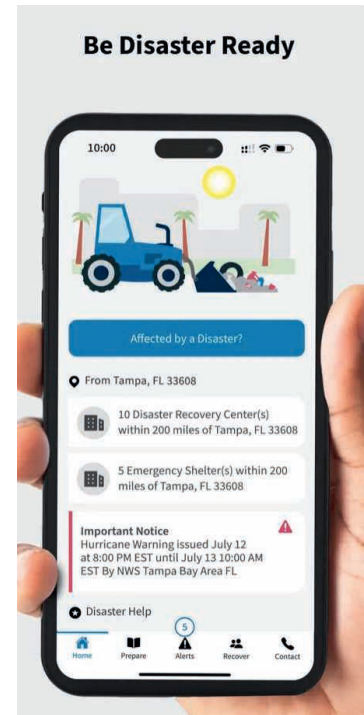
In 2022, 69,473 weather-related events resulted in 813 deaths and 1,718 injuries. Winter weather, heat, floods and hurricanes resulted in the most deaths that year, according to Injury Facts.

The National Safety Council offers safety tips specific on preparing for earthquakes, floods, hurricanes and tornadoes, and how to minimize fire risks.

Federal agencies, like Ready.gov and the National Oceanic and Atmospheric Administration also are valuable resources for emergency preparedness. When you face a natural or man-made emergency, try to stay informed through radio, TV or the Internet. In some cases, however, cable, electric and cell phone service will be disabled, making communication nearly impossible. The National Safety Council recommends the following general precautions that apply to many disaster situations:

- Make sure at least one family member knows first aid and CPR.
- Download the FEMA app for resources, weather alerts and safety tips.
- Have a family communication plan in place; all members of the family should review and practice the plan.
- Have all family members' and other important phone numbers written down or memorized.
- Have an emergency kit in your car and at least three days of food and water at home.
- Be sure to store all important documents – birth certificates, insurance policies, etc. – in a fire-proof safe or safety deposit box.
- Know how to shut off utilities.

The official FEMA mobile app offers critical resources and real-time alerts to help you prepare for emergencies, stay safe during disasters, and navigate recovery afterward. With features like customizable emergency checklists, shelter locations, disaster recovery centers, and direct access to emergency alerts, the app is a comprehensive tool for personal and family safety planning.



"Don't drive tractors into power lines."

Darcy Welsh, Age 9

Darcy cautions readers while driving tractors near power lines. Great picture, Darcy! Darcy's parents are Ryan and Rachel Welsh from Oral, S.D.

Kids, send your drawing with an electrical safety tip to your local electric cooperative (address found on Page 3). If your poster is published, you'll receive a prize. All entries must include your name, age, mailing address and the names of your parents. Colored drawings are encouraged.

Fruit SPECIALS

FROZEN FRUIT FIESTA

Ingredients:

- 1 6-oz. frozen orange juice concentrate
- 2 10-oz. frozen strawberries
- 2 cans pineapple with juice (1 tidbits, 1 crushed)
- 3-4 bananas, sliced
- 1/4 cup lemon juice
- 1 cup sugar
- 1 1/2 cup cold water

Method

Mix all together in a large bowl. Freeze in individual cups. Set out at room temperature for 1-2 hours before serving.

Optional: pour sour or 7-Up on top before serving.

Ginny Jensen
Sioux Valley Energy

PEACH RHUBARB CRISP

Filling:

- 3/4 cup sugar
- 3 tbsps. flour
- 1/2 tsp. nutmeg
- 1/8 tsp. salt
- 3 cups rhubarb (sliced, fresh or frozen)
- 2 1/2 cups chopped fresh or frozen unsweetened peaches

Topping:

- 1/2 cup flour
- 1/2 cup oatmeal
- 1/2 cup brown sugar
- 3/4 tsp. cinnamon
- 1/8 tsp. salt
- 5 tbsps. butter (cold)

Method

Combine the filling ingredients and fruit. Transfer to a greased 11"x7" baking dish. In a small bowl, combine the topping ingredients; cut in butter until mixture resembles coarse crumbs. Sprinkle over fruit. Bake at 375°F for 30 to 35 minutes until bubbly and browned.

*Recipe can be cut in half and bake in 8" x 8" pan.

Sally Florey
Charles Mix Electric

CHERRY ICE CREAM DESSERT

Ingredients:

- 1 1/2 cup Rice Krispies, crushed
- 1/4 cup brown sugar
- 1/4 cup melted butter
- 1 cup grated coconut
- 1/4 cup chopped nuts
- 1-quart vanilla ice cream
- 1 cup cherry pie mix

Method

1. Melt butter in frying pan. Add coconut and toast, stirring constantly as it burns easily. Cool
2. Add nuts, brown sugar and crushed rice Krispies. Mix together.
3. Press 2/3 of crumb mixture into a buttered 9x9 inch pan.
4. Soften ice cream and spread over crumb mixture then top remaining crumbs.
5. Freeze well. Cut in squares and top with cherry pie mix.
6. Can be served with any other toppings. Serves 6-8.

Rowena A. Wipf
Northern Electric

Please send your favorite recipes to your local electric cooperative (address found on Page 3). Each recipe printed will be entered into a drawing for a prize in December 2025. All entries must include your name, mailing address, phone number and cooperative name.

Youth Tour Recap



Amanda Haugen
Communications
Specialist

Thirty-six teens representing 22 South Dakota electric cooperatives traveled to the Washington, D.C., area June 15–21 for the 2025 South Dakota Youth Tour.

The program traces its roots to a 1957 speech by Lyndon B. Johnson, who urged electric cooperatives to send young people to the nation’s capital so they “can actually see what the flag stands for and represents.” Since South Dakota sent its first group in 1963, more than 1,300 students have represented the Rushmore State on this once-in-a-lifetime trip.

The 2025 group visited many historic and impactful sites in Washington, D.C., including Ford’s Theater—the site of President Abraham Lincoln’s assassination in 1865. Their visit, which took place on Juneteenth, added a layer of reflection on the nation’s path toward emancipation and equality. The group continued to explore themes of patriotism and national history throughout the week, viewing the Star-Spangled Banner at the Smithsonian’s National Museum of American History, the Declaration of Independence at the National Archives, and the Bureau of Engraving and Printing where a significant amount of the nation’s money is printed.

Students also met with South Dakota’s congressional leaders, including U.S. Senators John Thune and Mike Rounds, and had the chance to connect with Youth Tour participants from 44 other states. Together, they toured many of the nation’s most treasured landmarks,



(Above) The 2025 South Dakota Youth Tour group takes a photo outside of the White House in Washington D.C.



(Left) West River Electric sponsored two students to attend Youth Tour, Delaney Gross and Latham Gabriel.

including the U.S. Supreme Court, the Smithsonian National Museum of the American Indian, and more.

At the Gaylord National Resort & Convention Center, students concluded their trip with NRECA-led events, where they heard an inspiring message about perseverance and leadership from Youth Day keynote speaker Mike Schlappi, a four-time Paralympic medalist in U.S.A. men’s wheelchair basketball. 2629300

“The Youth Tour was a once-in-a-lifetime experience,” said Abby VanderLinden with Lake Region. “There are so many opportunities you get to partake in that you can’t experience on a regular family trip. My favorite part was the Holocaust Museum and being able to talk to two ladies that survived. It was the most eye-opening museum and it changed my perspective on life.”

Collecting Cacti

No Bark, Some Bite

Jacob Boyko

jacob.boyko@sdrea.coop

What's a companion that doesn't bark, doesn't chase cars and doesn't dig holes in your yard?

According to West River Electric Association member Richard Kruger, the answer is cacti.

For nearly 40 years, Richard has collected different varieties of cacti, from the barrel-shaped ferocactus to the stove pipe cactus that resemble the iconic saguaro cactus of the American Southwest.

"I remember as a kid, my dad had a few cacti and he always managed to keep them alive and take care of them," the retired aircraft plant worker and marine veteran said. "I always thought, cacti are so easy to take care of – they don't require a lot of time."

With that, Richard reignited the tradition of cacti collecting.

At this home near Tacoma, Washington, where Richard and his wife, Donna, lived prior to 2021, Richard amassed an impressive collection of cacti from around the world.

"We had a front porch – kind of like a four seasons room – and I was able to bring all of my cactuses and put them in there," he said. "It got to be kind of a hassle, because I had so many cactuses it was like an afternoon project transporting them."

Preparing to move to South Dakota, Richard unfortunately had to downsize his collection. But now, in the Rushmore state, he's begun collecting again, starting with the local species.

"There are six different varieties of cacti native to South Dakota, and just in the Rapid City area alone I've managed to find in the fields nearby all six varieties." 4131500

Even though raising cacti is generally straightforward, Richard says it's important to do proper research before any purchasing.

"If you're going to buy a cactus that's from Argentina, for instance, you will need to know what the climate is like there."

For South Dakota's native varieties, which include the Missouri Foxtail, Grassland Pricklypear and Prairie Pricklypear, among others, the cacti go dormant in the winter – no more afternoons for Richard and Donna spent hauling pots of cacti inside.

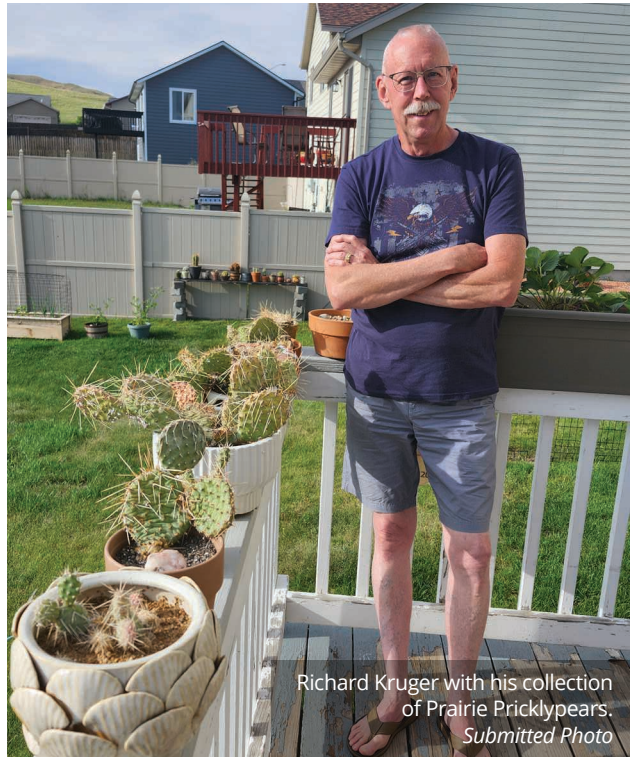
One important tip: resist the urge to water.

"The biggest challenge is people being overzealous about watering," Richard explained. "You can kill a cactus real quick. The roots ... will begin to rot first, and then it goes up through and next thing you know, you've got a cactus that's turning jelly."

He continued, "I found it's so much better to just kind of ignore (the cactus) and put a check mark on your calendar when you need to water."

Currently, Richard has about 25 cactuses in his collection, spread throughout his yard, patio and basement. His goal for his collection:

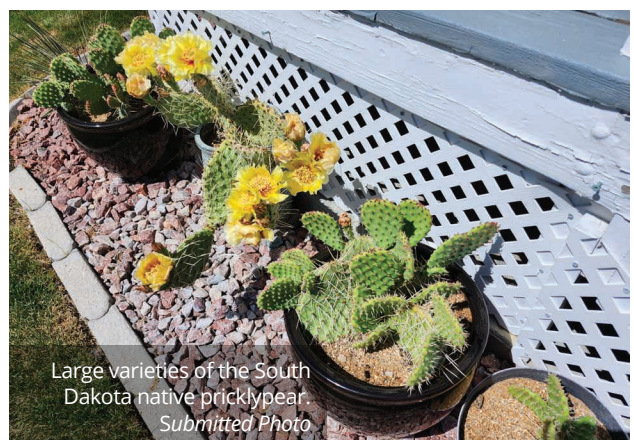
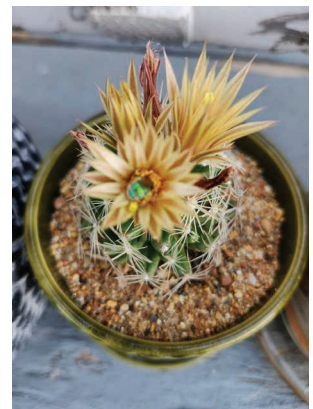
"Just to take care of them and enjoy them."



Richard Kruger with his collection of Prairie Pricklypears.
Submitted Photo



The Missouri Foxtail is common along the Missouri River and in western S.D.
Submitted Photo



Large varieties of the South Dakota native pricklypear
Submitted Photo



Kelly O'Bryan of Winner shows off his impressive collection of deer and elk sheds alongside his shed-hunting Labrador, Skye. Photos submitted by Kelly O'Bryan

SHED

HUNTING

Prairie Miles and Antler Piles

Frank Turner

frank.turner@sdrea.coop

Rosebud Electric member Kelly O'Bryan of Winner regularly hikes mile after mile of open prairie in search of the perfect shed. But he isn't looking for a place to store his garden tools or lawnmower – instead, he's after antlers. Each spring, deer and elk naturally shed their antlers, leaving behind prized treasures for shed hunters like O'Bryan to find.

O'Bryan jumped into the shed hunting hobby in 2020, during the social distancing months of the pandemic, after a friend invited him on a shed hunt in Montana. When O'Bryan found his first deer shed, he uncovered more than just a pair of antlers – he discovered a new passion.

"It was during the time when you couldn't go out and do anything, so you just had to make your own fun and find stuff to do," he laughed. "I just fell in love with covering as many miles as I possibly could each season, trying to pinpoint sheds. It's just like an Easter egg hunt."



O'Bryan lifts an elk shed found in Montana. Submitted Photo

Shortly after, O'Bryan fully committed to the hobby and added the ultimate scavenger to his team: a white lab named Skye. According to O'Bryan, it didn't take long for the dog to become an invaluable shed-hunting partner.

"I got Skye as a puppy, and I knew as soon as I got her, I

would train her to be a shed dog,” he said. “I taught her to sit and stay while I hid sheds all around the house. When she found one, I would give her lots of positive reinforcement. She figured it out just like that.”

Since then, O’Bryan and Skye have become seasoned shed hunters. In 2024 alone, the pair found 152 whitetail sheds, 25 mule deer sheds, nine elk sheds and 16 complete skulls – called “dead heads” – which resemble an English-style mount. Many of their best finds come from long days spent in remote country, often covering 10 to 15 miles in a single outing.

O’Bryan’s collection of sheds has grown into an impressive heap of bone and tines that continues to grow each season. Like many in the shed hunting community, he has found creative ways to showcase his finds with his most festive being an antler-adorned Christmas tree.

Others in the shed hunting community use their collection for art projects, crafting everything from knife handles to chandeliers. Some even trade or sell antlers to crafters, collectors, or pet product makers, giving shed hunting both recreational and economic appeal. Although O’Bryan does not sell his finds, he does cut up broken and damaged antlers for dog chews, gifting them to friends, family and his own favorite shed-hunting friend.

O’Bryan also has a few tips for beginners, drawn from miles of experience.

He says spring is the best time to search – antlers are freshly shed, and the grass is still short enough to give hunters a clear view. A good pair of binoculars is another must-have, helping spot antlers from a distance when the terrain allows for a higher vantage point.

And once you’ve found one shed, don’t assume the hunt is over. Whitetail deer are often in groups and antlers are often dropped in pairs so it’s worth taking the time to thoroughly scan the surroundings.

“You aren’t going to be finding many sheds unless you are willing to put on the miles,” he said. “The more you hike, the more you are likely to find sheds.”

More photos of O’Bryan’s collection and other hunting trophies can be found on his Instagram page: [@db_huntin](#).



(Above) O’Bryan praises Skye for a lifetime of discovering antlers. (Below) O’Bryan and Skye show their white tail antler finds from a winter shed hunt. *Submitted Photo*

ARE YOU ENROLLED TO RECEIVE OUTAGE TEXT NOTIFICATIONS?

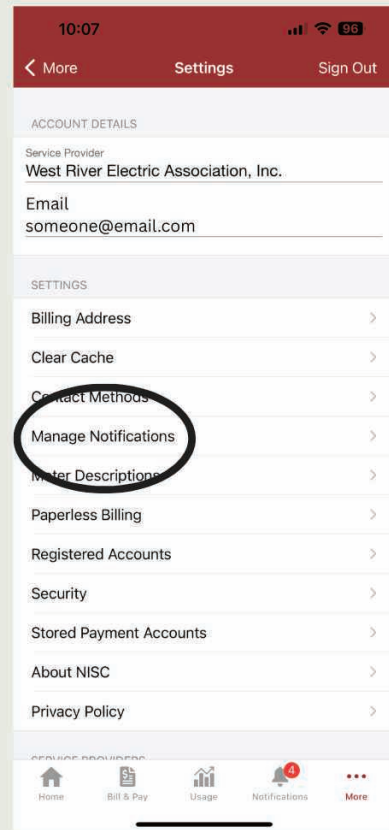
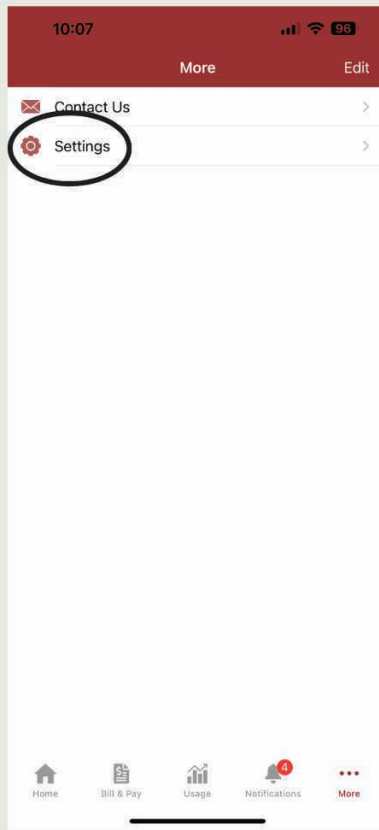


Tired of being left in the dark about outages? Enroll in text notifications to stay in the know when outages occur at your home or business. Enrolling is simple and free! Just follow the steps below!

STEP 1: Download the SmartHub app on your Apple or Android devices and create an account. **be sure to have your account number ready*

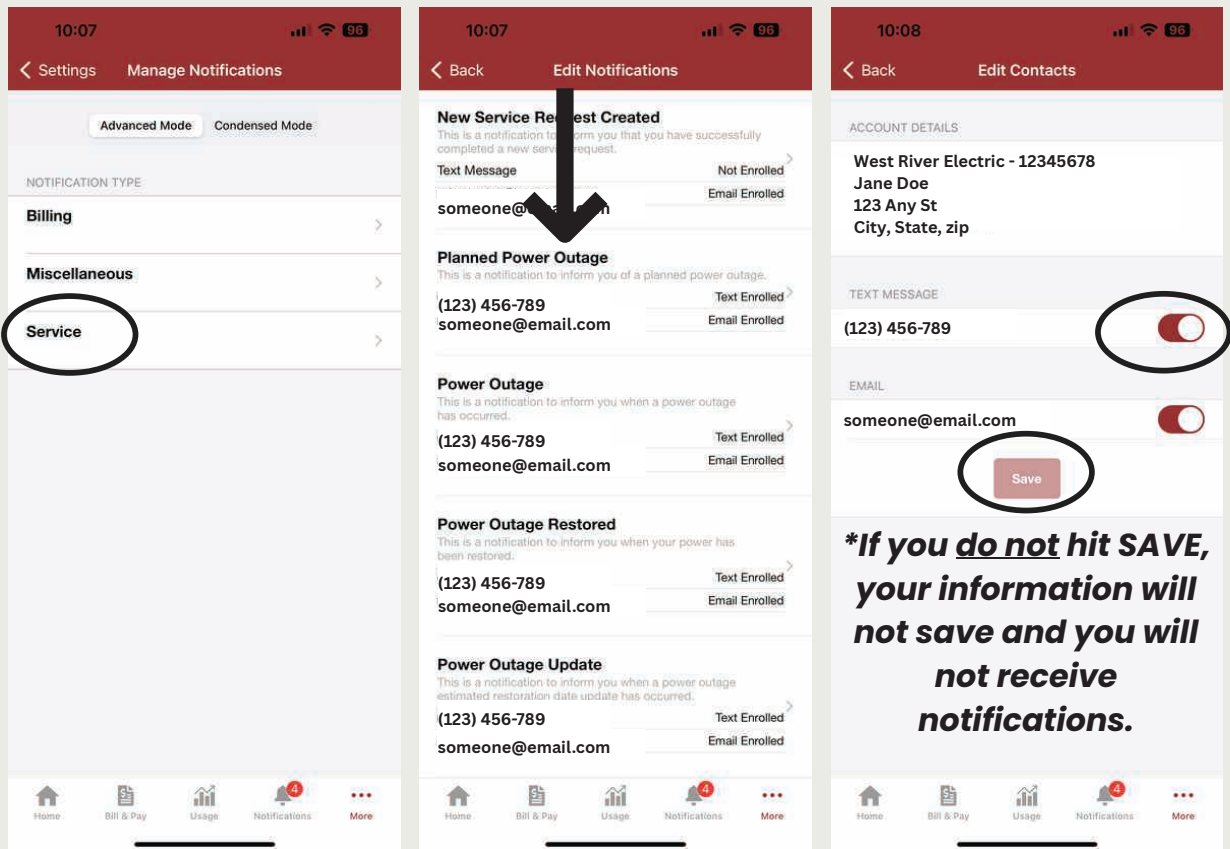


STEP 2: Click "MORE" in the bottom right corner of the screen. Then select "SETTINGS" and then "MANAGE NOTIFICATIONS."



STEP 3: Select “SERVICE” and scroll down to the “POWER OUTAGE” options. Select which option you would like to manage and insert your mobile phone number.

STEP 4: Once you have your number in the text field, slide the toggle switch over to display RED, and hit SAVE at the bottom of the screen.



YOU ARE ENROLLED.
NOW WHAT?

Once you have hit that SAVE button and you've verified your number, you should receive a notification the next time an outage occurs at your home or business. You will now also be able to report outages and request a status update. Don't be left in the dark when an outage occurs. Stay updated and know your electric cooperative is here for you.

To REPORT an outage:

- text the word OUT to our toll free number 855-939-3719

To get the STATUS of the outage:

- text the word STATUS to our toll free number 855-939-3719



HARNESSING AI

Electric Cooperatives Explore What's Next for AI

Frank Turner

frank.turner@sdea.coop

Artificial intelligence (AI) is becoming an increasingly popular tool for many industries and even in our daily lives. It has the potential to bring many opportunities, and a few challenges, to electric cooperatives. But machine learning takes time, and cooperatives are still in the process of determining how AI can be effectively used.

Like any new technology, AI brings with it a mix of potential and uncertainty. It's a hot topic — sometimes exciting, sometimes a little intimidating. But for electric cooperatives, the focus isn't on the buzz. It's on the basics: What problems can it solve? What efficiencies can it create? And how do cooperatives make sure they are using it safely?

That measured, practical approach is what's guiding East River Electric Power

Cooperative, a wholesale power supply cooperative which serves 25-member distribution systems in eastern South Dakota and western Minnesota, as it explores how AI might support the operations of its member cooperatives now and into the future.

Right now, most electric cooperatives in South Dakota have not yet integrated artificial intelligence into their operations or systems. But that doesn't mean the technology is being ignored. Across the state, many co-ops are watching AI developments closely, asking questions, and exploring how these tools might be used in the future. The focus remains on learning first — before implementing anything that could affect system reliability or member service.

At East River Electric Power Cooperative, that learning process is already well underway. According to Jeff May, chief information officer with East River Elec-

tric, the co-op has spent the past several years researching what AI has to offer. Their approach has been to identify practical, secure applications that could help improve efficiency, support employees in their day-to-day work, and ultimately benefit members.

“With the explosion of AI applications and models for both personal and professional uses, we've been exploring ways that East River Electric and our members can harness the power of AI while making sure that our data is secure from a cybersecurity perspective,” said May.

Because AI technology has the potential to interact with both internal systems and external networks, cybersecurity is a top priority. As South Dakota rural electric cooperatives look to adopt tools powered by AI and other tech, they will ensure their systems are safe from potential cyber threats. Strong digital defenses are essential for the safe use of any new technology.

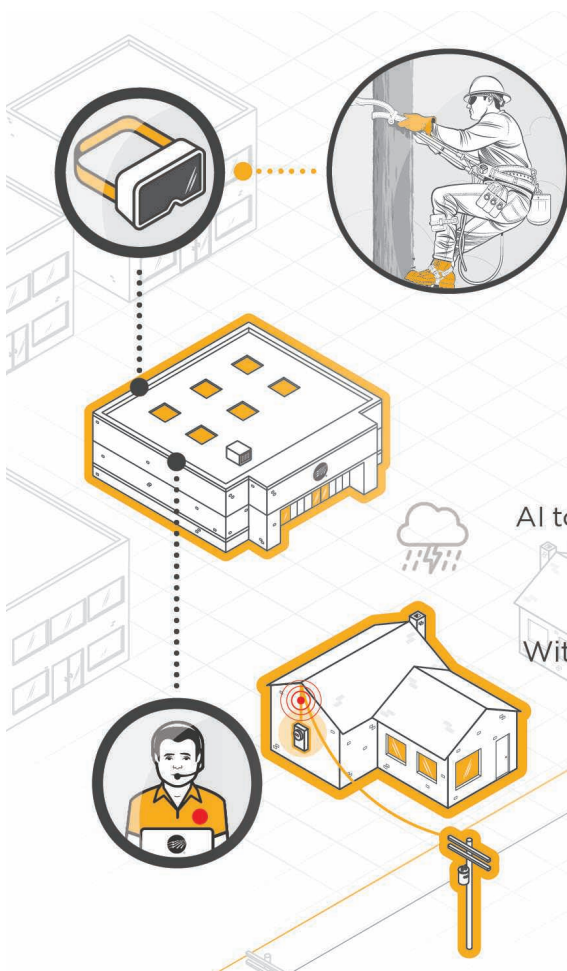
With safety in mind, May said East River Electric is actively partnering with Dakota State University graduate students to see how AI can be safely utilized by electric cooperatives. Together, East River Electric is working with the school to build an AI model that can predict electricity usage based on weather conditions and other factors to support the cooperative's load forecasting and rate forecasting capabilities. Although the technology is still in its infancy, May said he expects that someday AI will play a significant role in an electric cooperative's daily operations, including load forecasting, outage response and maintenance planning.

"It's difficult to predict how AI can be used for different types of jobs, but it will certainly become common throughout the organization as we learn all of the things AI can do," he said. "If it can be used to make our employees more productive and have a positive impact on the organization and our members, we will consider it. In some areas it could become commonplace within the next year, but throughout the cooperative it could take 3 to 5 years or more to be fully integrated in a safe and secure way."

Beyond grid operations, East River Electric is also trying out Microsoft CoPilot, an AI-powered assistant built into programs like Word, Excel, Outlook and Teams. A few employees are currently testing it to see how it might improve productivity and workflow, especially in communications and marketing departments.

Ultimately, if AI can streamline a process, predict an issue or improve service for electric cooperative members, May said it's worth considering. AI can be another tool in the cooperative tool belt that can make energy more reliable, services faster and operations more efficient.

"Over the next 5 to 10 years, AI's role in electric cooperatives is poised to grow significantly, driven by the need for efficiency, grid reliability and sustainability amid rising energy demands and technological advancements," said May. "Just the advancements that have been made in the last three years have been astounding to watch, and as more and more data centers and large language models are built in the coming years, it will become something that cooperatives likely use on a daily basis."



AI PUT INTO ACTION

Electric cooperatives are already using artificial intelligence (AI) and augmented reality (AR) for key tasks and activities. Looking ahead, co-ops see great potential for AI and AR as helpful tools for improving grid reliability and the services they provide to consumer-members.

SERVICES FOR MEMBERS

AI tools like chatbots can enhance member interactions and provide a tailored experience based on energy use data.

WEATHER FORECASTING

With the help of AI, weather forecasts will become more accurate, pinpointing areas to station utility crews.

EDUCATIONAL OPPORTUNITIES

Through augmented reality, or AR, lineworkers can experience interactive, lifelike trainings, rather than watching a video or webinar.

86th Annual Meeting

Saturday, October 11th
Registration: 9am
Meeting: 10am

Wall Community Center

Your co-op. *Your power.*



 West River Electric Association, Inc.
Your Touchstone Energy Cooperative
"Powering You For A Brighter Future"

Heat Season Begins Oct. 1st

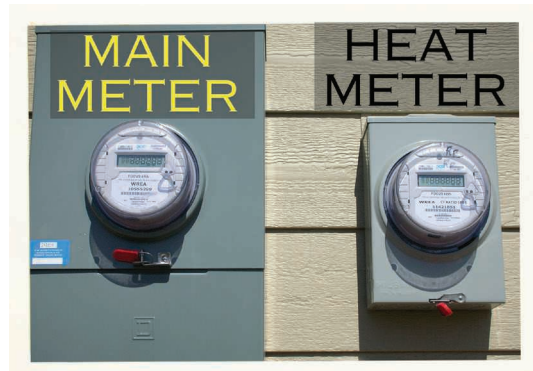


Jannette Thayer
Metering Admin Assistant

Please make sure your heat meter breaker is turned on before Oct. 1st. The discounted heat rate will begin then and go until May 1st. Any usage between those two dates on the heat meter will receive the heat rate discount. If you have any questions, please call our office at 605-393-1500 or 605-279-2135.

How To Tell If Your Heat Meter Is Off?

First, locate your heat meter. This is the second meter with a smaller enclosure than your main meter.



Next, look at the digital display. If there is not a blinking display, it is off and the meter does not have power.

Locate your electrical panel and look for a 2-pole breaker that is labeled "heat meter." Then turn that breaker back on. 11535500

Finally, verify that your meter display is now on and rest easy knowing you will be getting a discount on your electric heat when the time comes! If you are not comfortable performing this process, consult with an electrician. You can also call our office and a member services representative can verify your heat meter is communicating.

COOPERATIVE CONNECTIONS

Scan to set your preference



Want to save your co-op money and clear your paper clutter?

Sign up to receive your monthly Cooperative Connections magazine in your email! By doing so, you not only help the co-op save on printing and postage, but you also clear your monthly paper clutter in your mailbox.



West River Electric Association, Inc.

Your Touchstone Energy® Cooperative 

"Powering You For A Brighter Future"

LOCATE YOUR ACCOUNT NUMBER

If you locate your account number anywhere in this issue of West River Electric's *Cooperative Connections*, you will be a winner. There will be five account numbers placed randomly throughout the publication. If you spot your account number and notify our office before the 10th of the next month, you will receive a \$10 credit on your next bill.

WEST RIVER ELECTRIC OFFICE HOURS

RAPID CITY OFFICE

3250 E Hwy 44, Rapid City, SD
Monday-Friday 7 a.m. to 5 p.m.
605-393-1500

WALL OFFICE

1200 W 4th Ave, Wall, SD
Monday-Friday 7 a.m. to 5 p.m.
605-279-2135

A night depository is available at both offices for your convenience.

SERVICE AND BILLING QUESTIONS?

Contact 605-279-2135 or 605-393-1500 during office hours. E-mail us at info@westriver.coop for questions on your account.

OUTAGE OR EMERGENCY?

Contact 605-279-2135 or 605-393-1500 in the event of an outage or other emergency. Our calls are answered 24/7.

REGISTER TO WIN!

Bring this coupon and mailing label to the Touchstone Energy® Cooperatives booth at Dakotafest or the South Dakota State Fair to win a prize!

Your Phone Number: _____

Your E-mail Address: _____



To have your event listed on this page, send complete information, including date, event, place and contact to your local electric cooperative. Include your name, address and daytime telephone number. Information must be submitted at least eight weeks prior to your event. Please call ahead to confirm date, time and location of event.

UNTIL OCT. 31
Wallace Dow, Prairie Architect
Traveling Exhibit
Lake County Museum
Madison, SD
605-256-5308

SEPT. 5-7
James Valley Threshing Show
& Tractor Club
Threshermen's Park
Andover, SD
www.jamesvalleythreshers.com

SEPT. 6-7
Hill City Quilt & Fiber Arts Show
Hill City School Gym
Hill City, SD
www.heartofthehillscquilters.com

SEPT. 7
Farmer Tractor Parade
1 p.m.
Tractors, Cars & Food
Farmer, SD

SEPT. 7
Homesteader Day Celebration
Pioneer Demonstrations
1-4 p.m.
Beaver Creek Nature Area
Valley Springs, SD

SEPT. 13-14
Harvest & Kuchen Festival
Delmont, SD
www.twinriversoldiron.org

SEPT. 13-14
South Dakota Senior Softball
Tournament
Huron, SD
605-295-2039
www.southdakotaseniorgames.org

SEPT. 19
Veterans Stand Down
SD Military Alliance
8:30-11:30 a.m.
1600 W. Russell St.
Sioux Falls, SD

SEPT. 19-20
Holiday Arts Fall Craft Show
Davison Cty Fairgrounds
Mitchell, SD
605-770-8136

SEPT. 26-28
Coal Springs Threshing Bee
Featuring Horse-Drawn
Equipment
Meadow, SD
605-788-2229

SEPT. 27
Your Race, Your Pace
9:30 a.m.
Wylie Park
Aberdeen, SD

SEPT. 27
Wheelin' To Wall
Cycling Event
Wall, SD
www.wheelintowall.com

SEPT. 27
Ag Day
Roundup Arena
Belle Fourche, SD

OCT. 3
DSU Architecture Walking Tour
3-4 p.m.
Lake County Museum
Madison, SD

OCT. 10-11
Holman Acres Pumpkin Fest
& Vendor Show
Sat. 12-6 p.m., Sun. 10 a.m.-6 p.m.
Philip, SD
605-441-1060

OCT. 25
Breast Cancer Survivors' Luncheon
10:30 a.m.-1 p.m.
Blessed Sacrament Parish Hall
Rapid City, SD
RSVP: 216-536-3683

Note: We publish contact information as provided. If no phone number is given, none will be listed. Please call ahead to verify the event is still being held.