

COOPERATIVE CONNECTIONS



Crisp Breezes and Corn Mazes

Autumn Family Fun
Pages 8-9

Rodeo Champions
Pages 12-13

From Wheat Fields to Energy Fields: Energy Updates



Dick Johnson
CEO/GM

The wheat harvest is wrapping up as I complete this column. I had heard the averages were very good overall if you didn't get hailed out! The other crops like corn and sunflowers could use a good drink. It has warmed up and dried out like most July and Augusts do.

I was approached recently regarding a proposed solar and wind facility about eight miles southeast of New Underwood. Several questions were raised about our involvement. We are not involved in it and found out the same way most of the landowners in the area did. A developer is proposing to put in 56 MW of wind and 86 MW of solar. When producing fully, this would equal to powering over 100,000 average homes. Their preliminary plans are to connect to the WAPA substation south of New Underwood. We are required by Federal law on small solar and wind installations, unlike this project, to purchase all the excess power over what they use. However, we purchase it for what is called "avoided" cost. That is the cost of the fuel for Basin to run a base load generation unit. Currently that is under two cents per kWh. However, on projects of this size, the developers will try to negotiate a purchase power agreement with a power supplier such as Basin Electric. Basin Electric has purchased other renewable energy sources; however, the price needs to be competitive with other generation resources. This project is just going through the permitting stages with Pennington County, so it has a long way to go. West River normally stays neutral in cases like this. 11429700

I recently attended a Basin Electric manager meeting. Unfortunately, there was

not much cheery news. Basin expects a rate increase of 9%. With that, they expect the electric heat rate to increase about 5% as well. WAPA had earlier announced a proposed rate increase of 26% over 2 years. When we run these increases through our forecast internally, we end up with about 7.5% rate increase needed to cover this increase alone.

There are four factors really driving the expected increase from Basin and WAPA:

- Load growth and investment in reliability.
- Decreases in west side surplus sales from prior years.
- Impacts of inflation
- Volatility in the power markets

Basin was encouraged to look at some different options to temper the increase. We are hopeful. We will be looking closely over the coming months at what we will do here at West River. Can we absorb the increase this year and not increase rates? Do we do a power cost adjustment? Do we increase the kWh charge? Our budget for 2025 will tell the story.

I did not have space in this column this month to go into the regulatory issues that power generation faces that I learned more about at the recent Basin managers meeting. I will save that for a later date!

Please stay safe during the rest of the summer!

A handwritten signature in cursive script that reads "Dick".

COOPERATIVE CONNECTIONS

WEST RIVER ELECTRIC

(USPS No. 675-840)

Our Mission:

To serve our members' best interest.

Our Vision:

We will be a high performing co-op.

Our Values:

1. Safety
2. Accountability
3. Integrity
4. Innovation
5. Commitment to Community

This institution is an equal opportunity provider and employer.

Board President: Andy Moon

Board of Directors

Stan Anders – Vice President
 Jamie Lewis – Secretary
 Chuck Sloan – Treasurer
 Larry Eisenbraun
 Peter Blake
 Marcia Arneson
 Howard Knuppe
 Sue Peters

CEO and General Manager:

Dick Johnson –
 dick.johnson@westriver.coop

Editor

Amanda Haugen –
 amanda.haugen@westriver.coop

WEST RIVER ELECTRIC COOPERATIVE CONNECTIONS is the monthly publication for the members of West River Electric Association. Members subscribe to *Cooperative Connections* as part of their electric cooperative membership for \$6 a year. West River Electric Cooperative Connections purpose is to provide reliable, helpful information to electric cooperative members on matters pertaining to rural electrification and better living. Nonmember subscriptions are available for \$12 per year. Periodicals Postage paid at Wall, S.D., and at additional mailing offices. Postmaster: Send address changes to West River Electric Cooperative Connections, PO Box 412, Wall, SD 57790-0412.

Other correspondence to: West River Electric Cooperative Connections, 3250 E Hwy 44, Rapid City, SD 57703; telephone (605)393-1500, Exts. 6564, 6531 or 6522; fax (605)393-0275; e-mail amanda.haugen@westriver.coop.

Construction Update



Matt Schmahl
 Construction
 Project Manager

Another month has flown by this summer, and it's hard to believe we're already nearing the end of August! I wanted to provide an update on a significant project we completed last month and a few others we've undertaken.

Last month, I discussed the need for our work plan and provided details about our current capital work plan. A couple of years ago, within this plan, we identified the necessity of purchasing two substation transformers for new substation services that would be needed in the coming years. Fast forward two years, and yes, that's correct—these transformers have a two-year lead time! These transformers are typically among the most expensive pieces of equipment your cooperative owns, requiring careful planning for their purchase. Due to their high cost, we generally avoid keeping an abundance of these units in stock to prevent carrying the expense of unused equipment. However, your cooperative keeps a couple on hand to ensure a replacement is available if and when needed.

The first transformer was purchased for the Ashland Substation, which we have been working to construct over the past year. This transformer was installed and is currently undergoing control wiring and the remaining substation construction before we can energize the unit. 12131900

The second unit was installed at our Rapid Valley Substation, where a larger transformer was necessary to accommodate the load growth in the areas served by this station. This transformer upgrade was efficient because the old unit, which is slightly smaller than the new one, will be used in a planned substation in the near future. We utilized existing equipment by meeting both needs with a single purchase, ultimately reducing the cost

burden on our members. This newly installed transformer is already in service, supporting the members in the Rapid Valley area.

If you refer to the picture, you can see that special equipment, such as large cranes, is required to move and place these transformers due to their extensive weight. The typical weight of these large station transformers is usually 100,000 pounds or more.

As you can see, the employees at your cooperative are looking ahead to plan effectively and make the best decisions, coordinating all these projects despite the extremely fluid lead times.



WHEN THUNDER ROARS, GO INDOORS

Each year in the United States, there are about 25 million cloud-to-ground lightning flashes and about 300 people struck by lightning. Of those struck, about 30 people are killed and others suffer lifelong disabilities. Most of these tragedies can be prevented. When thunderstorms threaten, get inside a building with plumbing and electricity, or a hard-topped metal vehicle!

The National Weather Service collects information on weather-related deaths to learn how to prevent these tragedies. Many lightning victims say they were “caught” outside in the storm and couldn’t get to a safe place. Other victims simply waited too long before seeking shelter. With proper planning, similar tragedies can be avoided.

Some people were struck because they went back outside too soon. Stay inside a safe building or vehicle for at least 30 minutes after you hear the last thunder. While 30 minutes may seem like a long time, it is necessary to be safe.

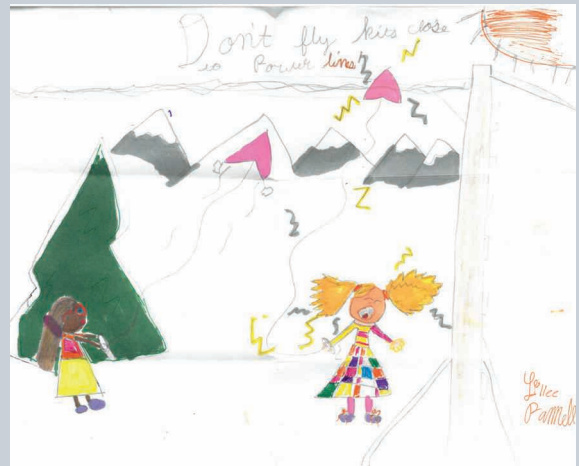
Finally, some victims were struck inside homes or buildings while they were using electrical equipment or corded phones. Others were in contact with plumbing, outside doors, or window frames. Avoid contact with these electrical conductors when a thunderstorm is nearby.

AVOID THE LIGHTNING THREAT

- **Have a lightning safety plan.** Know where you’ll go for safety and ensure you’ll have enough time to get there.
- **Postpone activities.** Consider postponing activities if thunderstorms are forecasted.
- **Monitor the weather.** Once outside, look for signs of a developing or approaching thunderstorm such as towering clouds, darkening skies, or flashes of lightning.

- **Get to a safe place.** If you hear thunder, even a distant rumble, seek safety immediately. Fully enclosed buildings with wiring and plumbing are best. A hard-topped metal vehicle with the windows closed is also safe. Stay inside until 30 minutes after the last rumble of thunder. Sheds, picnic shelters, tents or covered porches do NOT protect you from lightning.
- **If you hear thunder, don’t use a corded phone except in an emergency.** Cordless phones and cell phones are safe to use.
- **Keep away from electrical equipment and plumbing.** Lightning can travel through the wiring and plumbing if your building is struck. Don’t take a bath or shower, or wash dishes during a storm.

Source: National Weather Service



Power Line Safety “Don’t Fly Kites Close to Power Lines”

Lillee Pannell, Age 11

Lillee Pannell cautions kite flyers to be careful around power lines. Great advice, Lillee! Hobie’s parents are Scottie and Kimberly Pannell, members of Southeastern Electric Cooperative.

Kids, send your drawing with an electrical safety tip to your local electric cooperative (address found on Page 3). If your poster is published, you’ll receive a prize. All entries must include your name, age, mailing address and the names of your parents. Colored drawings are encouraged.

Summertime SWEETS

SUMMER FRUIT TART

Ingredients:

1 refrigerated pie crust
1 egg white, lightly beaten
1/3 cup sugar
2 tbsps. cornstarch
1/2 tsp. cinnamon
1/4 tsp. ginger
2 cups sliced peeled peaches,
(about 3 peaches)
1 cup blueberries
1/2 tsp. vanilla extract

Method

Preheat oven to 425 degrees. Prepare crust as directed on package. Place on foil-lined 12-inch pizza pan. If necessary, press out any folds or creases. Brush crust with about 1/2 of the beaten egg white. Mix sugar, cornstarch, cinnamon and ginger in medium bowl. Add fruit and vanilla; toss gently. Spoon into center of crust, spreading to within 2 inches of edges. Fold 2-inch edge of crust up over fruit, pleating or folding crust as needed. Brush crust with remaining egg white. Bake 20 minutes or until crust is golden brown. Cool slightly before serving.

McCormick

RHUBARB PIE

Crust

1-2 cups flour
1/2 stick butter or margarine
1/4 cup water

Add ingredients and knead to complete a pie crust. Amounts will vary due to humidity. Knead dough into pie pan and poke holes into the bottom as needed. You may make creative edges as you wish, however it is not necessary.

Pie

3 tbsps. butter or margarine
1 cup sugar
3 eggs, separated
2 tbsps. flour
1/8 tsp. salt
2 1/2 cups rhubarb
Smucker's Caramel Sundae
Syrup

Soften butter or margarine and stir together with the sugar, egg yolks, flour and salt. Beat egg whites until stiff. Add rhubarb and fold in the egg whites. Add the filling to the 8-inch unbaked pie crust. You may add a drizzle of Smucker's sundae syrup for additional flavoring before baking. Bake in oven set at 400 degrees until golden brown. You may also add more Caramel syrup to pie after baking for ultimate effect.

**Lisa Soukup (Kummer)
Tea, S.D.**

PEACH DELIGHT

Ingredients:

1/2 cup butter, melted
1 3/4 cups flour
Pinch of salt
2 tbsps. sugar
2 cups water
2 cups sugar
4 tbsps. cornstarch
3 oz. package peach jello
1 tbsp. butter
10 fresh peaches

Method

Preheat oven to 350 degrees. Combine butter, flour, salt and 2 tbsps. sugar. Mix and pat in 9x13 inch pan which has been sprayed with Pam. Bake for 15 minutes. Let cool when done baking. Combine 2 cups sugar and 2 cups water. Whisk in 4 tbsps. cornstarch until smooth. Cook until thickened in the microwave – stirring often. Remove from microwave and add 1 tbsp. butter and package of peach jello (do not add any water). Stir until dissolved and let cool. While cooling, dip fresh peaches in hot water and plunge in cold water bath. Remove skins and pits. Place back in cold water until all peaches are peeled. Drain peaches, slice into bite size pieces and mix into cooled peach glaze. Carefully pour the glaze over the crust and chill until firmly set. May be served with whip cream. You can substitute strawberry jello and sliced strawberries in place of the peaches. This makes a delicious cool summer dessert.

**Shirley Fletcher
Rapid City, S.D.**

Please send your favorite recipes to your local electric cooperative (address found on Page 3). Each recipe printed will be entered into a drawing for a prize in December 2024. All entries must include your name, mailing address, phone number and cooperative name.

Heat Season Begins October 1st



Jannette Thayer
Metering Admin
Assistant

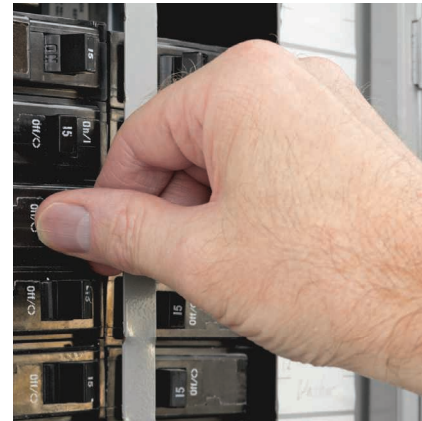
Please make sure your heat meter breaker is turned on before Oct. 1st. The discounted heat rate will begin then and go until May 1st. Any usage between those two dates on the heat meter will receive the heat rate discount. If you have any questions, please call our office at 605-393-1500 or 605-279-2135.

How To Tell If Your Heat Meter Is Off?

First, locate your heat meter. This is the second meter with a smaller enclosure than your main meter.

Next, look at the digital display. If there is not a blinking display, it is off and the meter does not have power.

Locate your electrical panel and look for a 2-pole breaker that is labeled “heat meter.” Then turn that breaker back on.



Finally, verify that your meter display is now on and rest easy knowing you will be getting a discount on your electric heat when the time comes! If you are not comfortable performing this process, consult with an electrician. You can also call our office and a member services representative can verify your heat meter is communicating.

5 Tips for a Safe Harvest

Electrical safety during harvest season requires vigilance and proactive measures. Follow these tips to reduce the risk of electrical accidents.

1. Maintain at least a 10-foot distance from power lines when operating equipment like grain augers, elevators and other tall machinery.
2. Use a spotter to navigate safely around power lines and other electrical equipment.
3. Ensure all farm workers are trained on electrical safety procedures.
4. Regularly inspect all electrical equipment and machinery for signs of wear and damage.
5. Keep first aid kits and emergency contact numbers in an easily accessible location.



Setting Yourself Up for Success in Your Home Office with a UPS System



Gerri Johnston
Manager of IT

In today's increasingly digital world, you may find your employer offers you the ability to work from home, giving flexibility and convenience.

However, with this comes the need for consistent, reliable power. While West River Electric is 99.9% reliable, power outages can and do occur, sometimes out of our control and sometimes within our control for maintenance. An unexpected power outage is never fun and can disrupt workflow, jeopardize deadlines, and potentially lead to equipment failure. But, in the event of an unexpected outage, there are ways to ensure productivity isn't lost, your equipment failure is lessened, and you remain "on the clock." 3116900

A residential Uninterruptible Power Supply (UPS) system can offer peace of mind and continuity during a power outage. Below are five pros to purchasing a UPS system and the benefits that come with it:

- 1. Continuous Workflow:** A UPS system ensures uninterrupted power to essential devices such as computers, routers, and modems. This continuity allows you to maintain your workflow without disruptions caused by unexpected power outages. It can be helpful during virtual meetings, specific deadlines, or critical tasks where any downtime could shorten productivity.
- 2. Data Integrity:** UPS systems

safeguard against data loss and corruption by providing a stable power source during outages. This protection is great for saving ongoing work progress and preventing potential setbacks due to the unexpected outage.

- 3. Internet Connectivity:** With a UPS in place, internet routers remain operational during power interruptions. This connectivity is important for maintaining communication through emails, accessing cloud-based applications, and participating in video conferences.
- 4. Equipment Protection:** Beyond providing power backup, UPS systems also shield sensitive electronic equipment from power surges and fluctuations that can occur during power restoration. This protection extends the lifespan of devices and reduces the risk

of hardware damage, saving on potential repair or replacement costs.

- 5. Peace of Mind:** Knowing that critical work tools are protected and will continue to function during unexpected power outages provides peace of mind for you as well as your employer. This confidence will allow you to focus on your tasks and the day ahead without fear of being interrupted.

Investing in a UPS system for your home office is a proactive investment ensuring you can keep productivity levels and meet professional commitments regardless of unexpected power outages. West River Electric does everything we can to maintain reliable electricity, but sometimes outages are unavoidable. By implementing a residential UPS system, you set yourself up for success with continued productivity and connection during your work day.





CRISP BREEZES AND CORN MAZES

A broken-down 1950s-style Chevrolet pickup welcomes visitors to the Back Forty Beef corn maze. *Photo submitted by Back Forty Beef.*

Celebrating Autumn on the Family Farm

Frank Turner

frank.turner@sdrea.coop

The first signs of autumn sweep across the plains as daylight dwindles and treetops wither into amber. For some, the nostalgia of fall is evoked by the first crisp breeze at a football game or the taste of a freshly picked apple from the orchard. But for Clint and Kelly Brandlee, Lake Region Electric members living in rural Pierpont, the magic of the harvest season begins with the opening of their family-owned corn maze.

The Brandlee family homesteaded their land in 1886 on the western edge of the Coteau Hills, an area characterized by rolling hills, fertile ground and native pastures. With deep roots extending through five generations of ranching and farming, Clint and Kelly's daughters, Jaycee

and Kylie, represent the sixth generation on the farm.

Over the years, the family has maintained their commitment to traditional farming values while embracing innovation. In 2020, Clint and Kelly

transformed their operation into a direct-to-consumer agriculture business, launching Back Forty Beef, LLC. Their new venture allowed them to provide locally raised beef at a fair price while giving customers the opportunity to see



Back Forty Beef hosts a number of family-friendly events including duck races. *Photo submitted by Back Forty Beef.*

how their animals and crops are raised, from farm to table.

“During the pandemic, people were looking for a direct source for their beef, and we wanted to provide that,” Kelly said.

Through Back Forty Beef, Clint and Kelly supplied their area with local beef and discovered new ways to engage their community. Just last year, the two started an annual tradition by planting a 12-acre, agriculture-themed corn maze as a way to bring something new to their part of the state. In just a year, the maze has become a hub for families to come together and celebrate agriculture and the harvest season.

“We wanted to do something really fun and get families outside in northeastern South Dakota during the fall, and what better way to do that than through a corn maze?” Kelly said. “It’s a way for us to share our passion for agriculture and our story. As a population, we are getting two to three generations removed from the farm. There is less of a connection to rural life, so any time we can provide people an opportunity to get out onto the farm and learn something, that benefits the whole of agriculture.”

This fall, Clint and Kelly are again inviting their surrounding communities to visit their homestead and explore this year’s newly designed maze. The maze is set to be open to the public every weekend after



A bird’s-eye view of last year’s Back Forty Beef corn maze. Photo submitted by Back Forty Beef.

Labor Day to the last week of October. The theme is pollinators, featuring images of a corn cob, flower, bee and barn. Several twists and turns will be embellished with fun facts about pollinators and crop production in South Dakota, making it an educational experience for all ages.

Along with the corn maze, Back Forty Beef is planning to incorporate other family-friendly activities, including duck races, farm animal exhibits, farm basketball, a straw mountain slide and more. Back Forty Beef will also host a farm store where customers can buy everything from local pumpkins to their homegrown beef.

Other local businesses are also joining

in the fun. A different local food truck is scheduled to attend each weekend during the open season, and local businesses are offering small discounts and deals for participants who complete the maze.

“There are checkpoints in the maze, and each checkpoint is equipped with a fun fact and a partnered local business,” said Kelly. “For example, Dairy Queen is offering a buy one, get one free offer for those who hole punch their card at their checkpoint and read the fun fact about pollinators and production agriculture.”

Clint and Kelly’s efforts to engage the community have resulted in a community that engages with their business. Like many other direct-to-consumer operations, Back Forty Beef has its own website and online shop for its brand of beef, dairy products, merchandise and even hand-poured tallow candles. The Brandlee family has also found success through their beef subscription club where boxes are regularly delivered to the doorsteps of customers every month. Whether it’s through the corn maze or the subscription beef boxes, Kelly said the local community has fully embraced Back Forty Beef.

“We had a lot of people who attended that had never done a corn maze before, so a lot of people were excited to do something new and different,” said Kelly. “We had a great turnout to our maze last year, and that’s why we decided to do it again.”



Owner-operators of Back Forty Beef, Kelly and Clint Brandlee and their two daughters, Jaycee and Kylie. Photo submitted by Back Forty Beef.

FOR THE KIDS SCHOOL SUPPLY DRIVE

DATES:

**AUG. 1ST-
SEPT. 20TH**



**West River Electric
Association, Inc.**

Your Touchstone Energy® Cooperative 

"Powering You For A Brighter Future"
this institution is an equal opportunity provider and employer

 605-791-6522

 Adam.daigle@westriver.coop

DROP OFF LOCATIONS:

**WALL OFFICE
RAPID OFFICE**



School Supply Drive



Adam Daigle
Energy Services
Advisor

As summer comes to a close, students across West River Electric's service territory are gearing up for a new school year. While this time of year is often filled with excitement and anticipation, it can also bring challenges for local families who struggle to afford the necessary supplies for their children.

It is time to kickstart the second annual FOR THE KIDS School Supply Drive! Our goal is to collect and distribute notebooks, pencils, pens, tissue, and other essential items to students in need, ensuring that every child has the tools they need to succeed in the classroom.

Access to school supplies has a direct impact on a student's ability to learn. Children who have the right materials are more likely to participate in class and complete their homework. Additionally, students who have access to the right supplies are more likely to have higher self-esteem and feel more confident in their abilities.

The 7th Cooperative Principle is Commitment to Community, and our second Leadership, Empowerment and Development (LEADs) class thought what

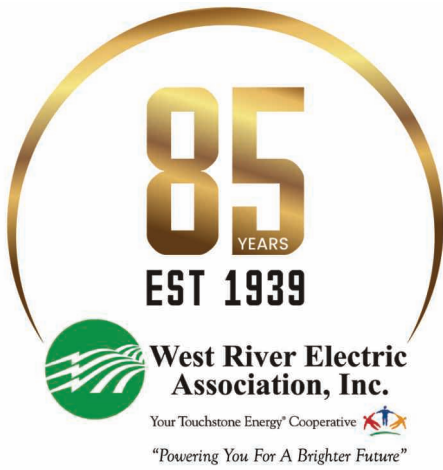
better way to fulfill that principle, than by hosting a school supply drive. West River Electric employees believe in giving back to our communities as it brings a sense of purpose and fulfillment. It's not just about the supplies themselves. The act of giving can have a positive impact on the giver and when we all come together to help our young members of the community, together we can make a difference in a child's life. 4587800

West River Electric is asking for your support to make this drive a success. Every little bit helps, and every item donated will make a difference in the life of a student in need.

It's easy to get involved. Just drop off your donations at our Rapid City or Wall offices. You can also spread the word to your friends, family, and co-workers to encourage their participation.

Let's work together to ensure that every local student has the tools they need to succeed. Join us in the power of giving and make a difference in the life of a child. 11058700

Together, we can make a difference!



SCHOLARSHIPS AVAILABLE at MEMBER APPRECIATION DAY!

Sept. 27th | 11am-7pm

Seniors! By simply showing up and answering a few questions, you will have a chance at ONE of THREE scholarships to help with your post secondary schooling!

Already have plans on Sept. 27th? Don't worry! We will have **two more opportunities** for your chance at a scholarship! Be sure to watch our social channels for details!

***Students parents must be members of WREA**



Rapid City Office | 3250 E HWY 44





RODEO CHAMPIONS

Short Go Finalists Win Touchstone Energy Shirts During the State Competition in Ft. Pierre

Jocelyn Johnson

jocelyn.johnson@sdrea.coop

South Dakota's electric cooperatives united in celebrating rodeo on June 15 during the state high school competition in Ft. Pierre, S.D. Cowboys and cowgirls competed in events that mimic the daily chores of a typical rancher, racing to place in the Short Go.

Short Go state finalists earned the coveted Touchstone Energy shirts that mark them as the top competitors of a beloved rural pastime. After a season of competing, the visual representation of wearing this shirt is

more than a fashion statement.

"These shirts are almost like a trophy," said Kylee Ellerton, a member of Black Hills Electric Cooperative in Custer, S.D. "It's something you can keep and look back on to remember."

Ellerton earned the Short Go shirt, sponsored by Touchstone Energy electric cooperatives. She won 10th place in goat tying at state.

"My grandpa and dad grew up rodeoing," Ellerton said. "So, I got started in rodeo pretty young."

High school rodeo events began in 1949, and by 1951, South Dakota was among five states that established the National High School Rodeo

Mataya Ward keeps her eyes on a goat she tied during the Short Go. Photo credit: Charles Minor

Association.

It's a shared heritage for many in the state, and electric cooperatives have a 22-year history of celebrating rodeo by sponsoring the Touchstone Energy Short Go Shirt program. More than \$150,000 has been given to this program since 2002, and these funds are used to honor the contestants who make it to the Short Go round



Photo credit: Charles Minor



Kailey Deknikker rounds a Touchstone Energy barrel during the state Short Go in barrel racing. *Photo credit: 4-C Photography*

of the state finals competition in their respective events.

Kailey Deknikker, member of Southeastern Electric Cooperative in Lennox, S.D., has a passion for rodeo and wishes to go as far as she can in the sport. She will be attending Mitchell Technical College this fall for business management and joining

the college rodeo team in barrel racing and pole bending.

“The shirt shows that your hard work paid off,” explained Deknikker after placing in the Short Go and winning a Touchstone Energy Short Go shirt. “It shows your accomplishment.”

Decknikker placed 7th in barrel

racing after running a time of 18.246 seconds in the 1st Go, 17.802 seconds in the 2nd Go, and 18.078 seconds in the Short Go.

Leighton Sander, a member of Black Hills Electric Cooperative in Custer, S.D., won 6th place in the bareback riding Short Go competition. Sander works with his family on a cow/calf operation outside of Custer, S.D.

“There’s some pride that goes with wearing that Short Go shirt,” said Sander. “You go to a rodeo and see a couple people wearing those shirts outside of the high school season, and you think, ‘they must have been good enough to make it to the Short Go – I better watch that guy.’”

Sander explained that his draw to one of the toughest events in the sport of rodeo is the adrenaline rush. He hopes to use his bareback riding skills in future horse training efforts while noting, “being able to stick to a horse is important.”

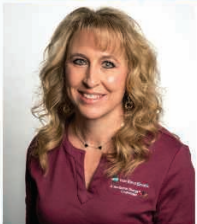
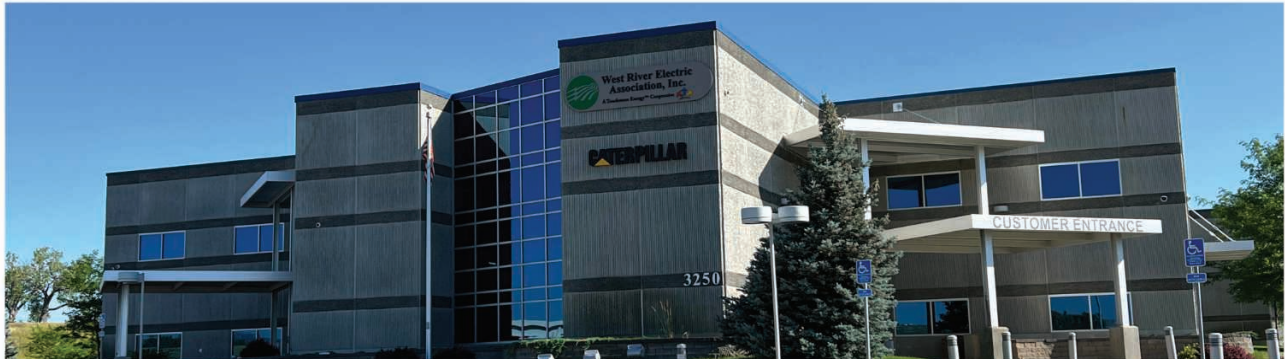
“I don’t know how to explain it,” Sander said. “It’s super scary before you start, but once you climb into that chute and they open up the gate, it’s like eating your favorite cake.”



Finalists wear Touchstone Energy Short Go shirts. *Photo credit: Charles Minor*

EMPLOYEE SPOTLIGHT

SHINING THE LIGHT ON WEST RIVER ELECTRICS DEDICATED EMPLOYEES



TRACEA LADNER
OPERATIONS
ADMIN ASSISTANT

HOW LONG HAVE YOU BEEN WORKING WITH WEST RIVER ELECTRIC?
I have been with West River Electric for 26 years.

WHAT DOES YOUR JOB ENTAIL?

My job involves providing administrative support for the Operations department. I handle new service requests, 811 requests, scheduling operation tasks, and maintain accurate records to ensure efficient project management.

WHAT DO YOU LOVE MOST ABOUT WEST RIVER ELECTRIC?

What I love most about West River Electric is our ongoing commitment to improving and providing the best service possible to our members and community.

WHAT IS YOUR FAVORITE MEMORY SINCE STARTING WORK AT WEST RIVER ELECTRIC?

While I do not have a single favorite memory, I have greatly enjoyed working with past and present employees. They have made my experience at West River Electric truly rewarding.

HOW WOULD YOU DESCRIBE WEST RIVER ELECTRIC IN THREE WORDS?

Reliable, Dedicated, Member-focused

WHAT MOTIVATES YOU TO GET UP AND GO TO WORK EVERY DAY?

My family and being a part of a fantastic team and doing work that I'm passionate about.



JARED STALLEY
MARKETING
REPRESENTATIVE

HOW LONG HAVE YOU BEEN WORKING WITH WEST RIVER ELECTRIC?

I have been with West River Electric for 9.5 years.

WHAT DOES YOUR JOB ENTAIL?

Educating and informing membership around energy efficiency. Managing the interconnection process for solar coming on board. Responsible for department inventory. Assist in coordination and planning of WREA events.

WHAT DO YOU LOVE MOST ABOUT WEST RIVER ELECTRIC?

The people I work with and getting the opportunity to serve our members.

WHAT IS YOUR FAVORITE MEMORY SINCE STARTING WORK AT WEST RIVER ELECTRIC?

While it is hard to pick a single memory, it's always nice when Amanda has a full basket of fruities in her office.

HOW WOULD YOU DESCRIBE WEST RIVER ELECTRIC IN THREE WORDS?

Reliable, Community-oriented, Safety

WHAT MOTIVATES YOU TO GET UP AND GO TO WORK EVERY DAY?

My family and fortunate enough to have a job that I enjoy everyday.



85th Annual Meeting

Powering Generations: 85 Years of Service

Saturday, October 12th

Registration: 9am | Meeting: 10am

Wall Community Center



West River Electric Association, Inc.
Your Touchstone Energy® Cooperative
"Powering You For A Brighter Future"

LOCATE YOUR ACCOUNT NUMBER

If you locate your account number anywhere in this issue of West River Electric's *Cooperative Connections*, you will be a winner. There will be five account numbers placed randomly throughout the publication. If you spot your account number and notify our office before the 10th of the next month, you will receive a \$10 credit on your next bill.

WEST RIVER ELECTRIC OFFICE HOURS

RAPID CITY OFFICE

3250 E Hwy 44, Rapid City, SD
Monday-Friday 7 a.m. to 5 p.m.
605-393-1500

WALL OFFICE

1200 W 4th Ave, Wall, SD
Monday-Friday 7 a.m. to 5 p.m.
605-279-2135

A night depository is available at both offices for your convenience.

SERVICE AND BILLING QUESTIONS?

Contact 605-279-2135 or 605-393-1500 during office hours. E-mail us at info@westriver.coop for questions on your account.

OUTAGE OR EMERGENCY?

Contact 605-279-2135 or 605-393-1500 in the event of an outage or other emergency. Our calls are answered 24/7.

REGISTER TO WIN!

Bring this coupon and mailing label to the Touchstone Energy® Cooperatives booth at Dakotafest or the South Dakota State Fair to win a prize!

Your Phone Number: _____

Your E-mail Address: _____



Photo Credit: SDStateFair

SEPT. 20-22 **South Dakota Festival of Books**

Various Locations
Brookings, SD
605-688-6113

SEPT. 27-29 **Coal Springs Threshing Bee and Antique Show**

Meadow, SD
605-788-2299

OCT. 5-6 **Run Crazy Horse Marathons**

Crazy Horse
605-390-6137
www.runcrazyhorse.com

OCT. 5-6 **Magic Needlers Quilt Show**

Codington County Extension Complex
Watertown, SD
605-881-3273

OCT. 5-6 **The Black Market**

Saturday 9 a.m.-5 p.m.
Sunday 10 a.m.-3 p.m.
W.H. Lyon Fairgrounds
Expo Building
Sioux Falls, SD
605-332-6004

OCT. 6 **Giant Pumpkin Festival**

Bentley Memorial Building
Bison, SD
Enter Pumpkins by 11:30 a.m.
605-244-5475

OCT. 10-11 **Rural Women Conference**

The Lodge of Deadwood
Deadwood, SD
SouthDakotaWomenInAg.com

AUG. 28-SEPT. 2 **South Dakota State Fair**

7 a.m.-8 p.m.
Huron, SD
www.SDStateFair.com

SEPT. 1 **Studebaker Car Show**

10 a.m.-3 p.m.
Custer, SD
605-673-2244

SEPT. 2 **Hidewood Valley Steam Threshing Show**

Starts at 1 p.m.
Clear Lake, SD
605-881-8405

SEPT. 6-7 **Ribs, Rods & Rock n' Roll**

Vermillion, SD
www.sdbbq.us

SEPT. 8 **Homesteader Day**

1-4 p.m.
Valley Springs, SD
Beaver Creek Nature Area

SEPT. 12-15 **South Dakota Film Festival**

Downtown Capitol Theatre
Aberdeen, SD
605-226-5494

SEPT. 13-14 **Black Hills Polkapalooza**

Each Night at 4-10 p.m.
Hill City, SD
605-574-2525

SEPT. 14 **RVUMC Community Rummage Sale & Bake Sale**

8 a.m.-Noon
Rent a Table for \$10
605-393-1526

SEPT. 14-15 **2024 Kuchen & Harvest Festival**

Delmont, SD
605-928-3792

SEPT. 17 **EV Expo**

W.H. Lyon Fairgrounds
Sioux Falls, SD

To have your event listed on this page, send complete information, including date, event, place and contact to your local electric cooperative. Include your name, address and daytime telephone number. Information must be submitted at least eight weeks prior to your event. Please call ahead to confirm date, time and location of event.

Note: Please make sure to call ahead to verify the event is still being held.