

COOPERATIVE

CONNECTIONS



Wall Meats Expansion

Reviving Local
Meatcutting in
New Underwood
Pages 8-9

Cybersecurity on
the Grid
Pages 12-13

Leading the Winning Team: Insights from “Head Coach” of West River Electric



Dick Johnson
CEO/GM

As I write my monthly column at the end of March, it is going strong with basketball, basketball, and more basketball. I love watching it, especially the high school tournaments, but college as well. I have a colleague of mine, when asked to introduce himself at a meeting, refers to himself as “Head Coach” instead of CEO/Manager. He is right in many ways, so I have been borrowing that quip too. I am fortunate I am the “Head Coach” of a wonderful team here at West River that always has our members’ best interests in mind.

This month is special for me as we recognize, celebrate, and thank our team of employees for all their work. April is lineman appreciation month with Monday, April 8, specifically called out to recognize their hard work the line department does every day to make our team successful and score many more wins than losses. On Wednesday, April 24, it is Administrative Professionals Day. Our entire office will be recognized then as they all do so much making it extremely hard to single out one or two individuals on our team.

As the Head Coach, I get to lead this talented team. I get to develop a strategy on how we will win as an organization, with input from the players and “assistant coaches,” our staff. I then make a game plan and ask them to execute it. We draw X’s and O’s on the whiteboards during the game to make sure we come out as winners each time. We expect our players to give 110% all the time, and our team at West River does just that. I do not have to give many motivational speeches in the locker room as they lay it out on the court every day. The one significant difference though is that we do not seem to get a half-time to rest

and regroup anymore. We play the game over and over every day sometimes throwing the playbook we rely on into disarray. We then pivot to find the right play that works to help us win. Sometimes I yell at the referees (i.e., regulators) but have yet to get a technical foul even though I wished sometimes they would T me up!

In the end, if I as Head Coach do not deliver, the Board will ask me to step down and find someone else to coach the team. I do not want that to happen, so we work hard to make sure we have the best team players we can find to be on the team. Occasionally we lose them to the transfer portal, and they go elsewhere, but not very often. We rarely are forced to bench anyone as all 59 team members are committed to the game every day. I am truly blessed and honored to be the “Head Coach” here at West River.

You will notice in your mailbox at the end of April a capital credit allocation statement. This is your proof that you are a member of the cooperative and receive in the form of an allocation your share of the margins from 2023. Should you have any questions regarding this allocation, you can find more information about it further in this magazine or as always, please give our office a call at 605-279-2135 or 605-393-1500.

It is that time of year that I always remind our members as activities ramp up: Please Stay Safe!

A handwritten signature in cursive script that reads "Dick".

COOPERATIVE CONNECTIONS

WEST RIVER ELECTRIC

(USPS No. 675-840)

Our Mission:

To serve our members' best interest.

Our Vision:

We will be a high performing co-op.

Our Values:

- 1. Safety
- 2. Accountability
- 3. Integrity
- 4. Innovation
- 5. Commitment to Community

This institution is an equal opportunity provider and employer.

Board President: Andy Moon

Board of Directors

- Stan Anders – Vice President
- Jamie Lewis – Secretary
- Chuck Sloan – Treasurer
- Larry Eisenbraun
- Peter Blake
- Marcia Arneson
- Howard Knuppe
- Sue Peters

CEO and General Manager:

Dick Johnson –
dick.johnson@westriver.coop

Editor

Amanda Haugen –
amanda.haugen@westriver.coop

WEST RIVER ELECTRIC COOPERATIVE CONNECTIONS is the monthly publication for the members of West River Electric Association. Members subscribe to *Cooperative Connections* as part of their electric cooperative membership for \$6 a year. West River Electric Cooperative Connections purpose is to provide reliable, helpful information to electric cooperative members on matters pertaining to rural electrification and better living. Nonmember subscriptions are available for \$12 per year. Periodicals Postage paid at Wall, S.D., and at additional mailing offices. Postmaster: Send address changes to West River Electric Cooperative Connections, PO Box 412, Wall, SD 57790-0412.

Other correspondence to: West River Electric Cooperative Connections, 3250 E Hwy 44, Rapid City, SD 57703; telephone (605)393-1500, Exts. 6519, 6531 or 6522; fax (605)393-0275; e-mail robert.raker@westriver.coop.

Scholarship Recipients for 2024



Brodi Sundall



Burk Blasius



Hailey Wright



Kallie Flint



Kamryn Shull



Kaylen Spotted Bear



Linkin Ballard



Mandie Chambliss



Nora Dinger



Quinn Moon



Sierra Hilgenkamp



Sydney Bremer



Emily Koble

West River Electric awarded \$7,000 in scholarships to 14 area students assisting in their post-secondary schooling. Not pictured is Colin Bender.



West River Electric Association, Inc.

Your Touchstone Energy® Cooperative



"Powering You For A Brighter Future"

Your Safety Matters

Prevent home electrical fires

Eight out of 10 fire-related deaths occur at home – the place that embodies comfort and security. That’s why it’s important to take steps to keep everyone safe.

Faulty or deteriorating electrical cords are a top cause of fires at home. Cords that become frayed or cracked can send sparks to flammable surfaces. Check your cords to ensure that they are in good shape, and replace any that are worn.

In addition, make sure you are not overloading circuits. If you’ve been in your home for more than 10 years, have your circuit breaker box inspected by a licensed electrician to tighten loose connections and check for overloaded circuits.



Homes with copper wiring need to be inspected every 20 years, and homes with aluminum wiring should be inspected every five years.

Check all Ground Fault Circuit Interrupter (GFCI) outlets several times each year by pushing the test/reset button to be sure they are working properly.

If breakers are continually tripping or if fuses are blowing frequently, that’s a sign of potential trouble. The cause could be old wiring unable to handle the load demand of today’s modern appliances. If needed, ask a licensed electrician to install additional circuits for safety.

Use surge protectors and power bars to help prevent overloading an electrical outlet, plugging no more than three cords into the strip.

May is National Electrical Safety Month. We urge you to take the time and steps needed to lower the risks of electrical fires. Keep your family safe.



Stay Away from Power Lines

Weston Koistinen, Age 6

Weston Koistinen warns readers to be safe by staying away from power lines. Weston’s parents are Dion and Stephanie Koistinen, members of H-D Electric Cooperative.

Kids, send your drawing with an electrical safety tip to your local electric cooperative (address found on Page 3). If your poster is published, you’ll receive a prize. All entries must include your name, age, mailing address and the names of your parents. Colored drawings are encouraged.

SUMMER CASSEROLES

BREAKFAST CASSEROLE

Ingredients:

- 1 5 oz. package croutons, any flavor
- 2 cup sharp Cheddar cheese, shredded
- 1 lb. sausage, fried and drained
- 9 eggs
- 1 can evaporated milk
- 1 tbsp. mustard

Method

Spray 9x13 pan with vegetable oil. Arrange croutons on bottom. Sprinkle cheese over croutons and put sausage over cheese. Combine eggs, milk and mustard. Beat to blend and pour into pan. Bake covered at 350 degrees for 45 minutes.

Janet Ochsner
Box Elder, S.D.

CHICKEN CASSEROLE

Ingredients:

- 1 package Chicken Stove Top Stuffing mix
- 3 cups cooked cut up chicken
- 1 can cream of mushroom soup
- 2/3 cup milk
- 1 can cream of chicken soup
- 2 eggs, beaten
- 2 cups chicken broth

Method

Grease a 9x13 pan and put 1/2 of the stuffing mix in the pan. Cover with chicken. Combine soups and milk and spoon over chicken. Spread other 1/2 of stuffing over the top. Pour 2 cups of chicken broth over all and spread with beaten eggs. Bake at 350 degrees for 1 hour.

Gail Lee
Brookings, S.D.

TACO CASSEROLE

Ingredients:

- 1 1/2 lbs. ground beef
- 1 package taco seasoning mix
- 1 can (16 oz.) pinto beans, drained and rinsed
- 1 can (15 oz.) tomato sauce
- 1 can (11 oz.) whole kernel corn, drained
- 1 cup shredded Cheddar cheese
- 1 cup coarsely crushed tortilla chips

Method

Preheat oven to 400°F. Brown meat in large skillet on medium-high heat. Drain fat. Stir in seasoning mix, beans, tomato sauce and corn. Bring to boil. Reduce heat to low; simmer 5 minutes. Spoon into 2-quart baking dish. Sprinkle with cheese and tortilla chips. Bake 5 to 10 minutes or until cheese is melted. Serve with assorted toppings, if desired.

McCormick

Please send your favorite recipes to your local electric cooperative (address found on Page 3). Each recipe printed will be entered into a drawing for a prize in December 2024. All entries must include your name, mailing address, phone number and cooperative name.



Construction Report



Matt Schmahl
Construction
Project Manager

As we begin the 2024 construction season, we have started a transmission rebuild project outlined in our 4-year work plan. This project is the first phase of a multi-phase transmission line rebuild already underway along the Eglin Street and Cheyenne Boulevard corridor.

Covering a 2-mile stretch, the initial segment starts at the intersection of Dyess Avenue and Eglin Street, extending east to the Northern Lights Subdivision. The second stretch, originating from our Rapid City Substation located east of Campbell Street along Highway 44, proceeds eastward before turning northward for 1.8 miles until it intersects with Dyess Avenue and Eglin Street. 264400

We are using the existing right-of-way for the new line and aiming to maintain nearly the same alignment as the old infrastructure, transitioning from traditional H-Structure construction to a single pole design. This shift offers improved suitability for the environment along this route and with the chosen single-pole design having a proven track record for strength and reliability, we felt it was a good switch. Featuring 85-foot poles, the vertically constructed narrow-profile transmission line ensures reliability, aligning with the area's evolving infrastructure demands. 382601

This reconstruction project not only enhances infrastructure resilience against adverse weather conditions but also addresses the escalating electrical demands resulting from rapid growth in the area. These specific rebuilds were selected during the creation of our recent 4-year capital

work plan, taking into account the age of the infrastructure and the increasing electrical needs required to support the area's expanding demands. As part of our long-range studies, we are anticipating future electrical requirements for this infrastructure, given its current age and the evolving demands. With these factors in mind, we have taken a proactive approach to initiate the necessary upgrades.

If you have traveled through this section of our system recently, you may have observed the activity of West River Electric line crews and contractors. We wish to inform you that their operational presence will persist. In light of this, we kindly request that if you find yourself in the vicinity and encounter ongoing construction activities, please exercise caution while in the construction area. Given the high-traffic nature of this area with confined working spaces, our linemen greatly value your cooperation.

These ongoing infrastructure upgrades ensure safe, reliable, and dependable electricity now and in the future. The employees at West River Electric are dedicated to delivering safe, reliable, and dependable service to our membership, and we believe these rebuilds and planned projects will contribute to our continued success.

Until next time!



Announcing Youth Excursion 2024 to Bismarck, North Dakota

Calling all high school freshmen, sophomores, and juniors! Is your parent or guardian an active member-owner of West River Electric? If so, you're eligible to apply for an unforgettable summer experience: Youth Excursion 2024!

If chosen, you will receive an all-expenses-paid trip to Bismarck, N.D., for a youth event unlike any other. From July 22-24, participants will stay on-campus at Bismarck State College. During this time, they will have the opportunity to sightsee, make friends from all across the state and gain a new understanding of where their electrical power comes from. 399602

Once participants arrive on the campus, they can look forward to building friendships, taking in the sights of North Dakota's capitol and learning "The Story Behind the Switch." During their stay, students will get to hear from power industry experts and participate in hands-on activities. Students will be given the opportunity to tour the Great Plains Synfuel Plant, Freedom Coal Mine and Antelope Valley Station Power Plant to see where South Dakota's power is generated.

There will also be plenty of time built in for recreation and socializing – students will play games, visit local attractions and much more. Participants can look forward to connecting with students from all across South Dakota, building strong friendships and learning from their peers.

To be eligible for Youth Excursion, students must be in high school and their parent or guardian must be an active member-owner of West River Electric.

To apply, visit our website, www.westriver.coop, scan the QR code on the following page or tear the bottom portion of this page out and mail to:

West River Electric
 Attn: Amanda Haugen
 3250 E HWY 44
 Rapid City, SD 57703



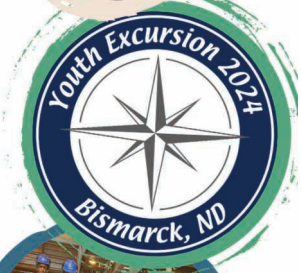
All-Expense Paid Trip:
JULY 22-24, 2024
BISMARCK, ND

Deadline to apply: June 10th at 5pm

Recreation
 Students will get the opportunity to socialize with their peers, explore local attractions, and play games!

Friendships
 Students will get the opportunity to meet new friends and gain life-long friendships

Learn where Electricity comes from
 Students will have the opportunity to tour Great Plains Synfuel Plant, Freedom Coal Mine, and Antelope Valley Station Power Plant.



-Any high school student in 9th, 10, or 11th grade is eligible to apply
 -Students parents or guardians must be members of WREA

To apply for 2024 Youth Excursion, complete the form below and return it to:
 West River Electric Association

The deadline to apply is June 10, 2024. If you have questions please contact
 Amanda Haugen at 605-391-1500

Name: _____
 Address: _____ City: _____ State: _____ Zip: _____
 Phone: _____ Email: _____
 School: _____ 2024/2025 Grade: _____
 Gender: _____ T-Shirt Size: _____

Return this information by June 10, 2024 to:

West River Electric
 Attn: Amanda Haugen
 3250 E HWY 44
 Rapid City, SD 57703



Patsy Besson helps package fresh cuts of meat at the Wall Meat Processing plant.
Photo Credit: Shannon Marvel

Wall Meats Revives Local Meatcutting in South Dakota Through New Underwood Expansion

Shannon Marvel

shannon.marvel@sdrea.coop

A local meat processing plant is expanding its footprint in Pennington County in a way that will put more locally produced protein on dinner tables and bolster the local meat processing workforce throughout South Dakota.

The man behind this plan is local business owner Ken Charfauros, who owns Wall Meat Processing, which has locations in Wall and Rapid City.

Charfauros is currently raising funds through a capital drive campaign to finance the construction of a 30,000 square foot meat processing facility in New Underwood. The new facility will help train the next generation of meat processors through a partnership with Western Dakota Tech in Rapid City.

“We are at \$2.8 million in our drive. We also have the \$3.3 million USDA Rural Development grant, which is a meat and poultry expansion plan grant. We are about \$200,000 short of our goal,” Charfauros said.

He added that the New Underwood processing plant will also use funding from the Meat and Poultry Intermediary Lending Program (MPILP), which according to the USDA’s website “provides grant funding to intermediary lenders who finance – or plan to finance – the start-up, expansion, or operation of slaughter, or other processing of meat and poultry. The objective of the MPILP is to strengthen the financing capacity for independent meat processors, and to create a more resilient, diverse, and secure U.S. food supply chain.”

Charfauros said he’s still meeting with potential investors and has a financial team focused on creating relationships with local ag producers.

“After we get our capital drive, the plan itself will be about \$21 million,” he added. “And then we start the project. The groundbreaking is going to happen in about a year and the facility will begin operations six months after that.”

Charfauros said he expects to purchase the property to site the new plant this spring.

Returning to a Passion

Wall Meats Processing opened for business 57 years ago, but

Charfauros took ownership over the facility in 2017. His passion for meat cutting began when he was a teenager while working for a local meat plant in Delaware.

“It was my high school job and I loved it. After I graduated high school, I felt that my country needed me, so I joined the Air Force and did 30 years. But I always missed that part of my life,” Charfauros recalled.

“A guy that taught me how to cut was like my second dad, and I always wanted to come back to it. My son had just graduated from South Dakota State University, and I had retired from the Air Force. That’s when we decided to buy a plant.”

His son manages the store in Rapid City while Ken’s three nephews help run the family’s businesses in Wall, which include Wall Meats and the Red Rock restaurant.

Supporting Local Producers

Building the new facility has been a challenging venture that’s been years in the making.

“We started building this plan about four years ago, then COVID hit and got in our way. Then, we were lucky enough to get those grant awards last year, and ever since we have been working diligently to get the format right,” Charfauros said.

“I have drawings. I have an equipment list all put together — everything is ready to go except for this capital drive that we are undergoing.”

Charfauros said he has been meeting with both potential and locked-in investors daily over the last year to produce the required financing.

“We have met with over 600 people with 99 percent of those people being producers, because this is all for them. This plant offers them premium pricing above the market rates,” Charfauros said.

While the cattle market is high now, Charfauros remains realistic that the market can change for the worse.

While he hopes the market remains high enough for producers to survive, his partnership with producers will serve as

added security. That means the partnership must be tightknit.

He knows he cannot do it alone.

Reviving a Dying Art

“Meat cutting is a dying art, and we teach meat processing at our store in Rapid City to bring that art back. We’re trying to fight for that industry as it is,” he said.

Three meat processing students are currently being taught at the Rapid City facility through a partnership with Western Dakota Tech, which recently began offering the two-year program.

Pam Stillman-Rokusek, director of communications and marketing at Western Dakota Tech, said three students are currently enrolled in the Meat Processing program. Of those three, two will graduate in May.

But the college is still working on more outreach.

“Enrollment has been a bit low in the program, so the plan is for a hiatus this fall. They’ll revamp the curriculum. Then, we will certainly do additional outreach. We have done advertising, gone to the schools. We have reached out to 4-H

groups and done some traveling, but we need to turn it up a notch to produce more students in the program. That is our goal,” Stillman-Rokusek said.

Despite the Meat Processing program being put on hiatus, the school will still ensure that the remaining student completes the program while actively working on developing the program and outreach methods.

“There’s such a high need for meat processors and we’re looking at different ways to fill that gap. It’s something we’re committed to doing,” she added.

The goal is to enroll at least five students in the following school years when the program restarts.

The learning center that will be built within the New Underwood facility will also teach producers, in addition to students, the art of meat cutting.

“We are trying to bring that industry back to what it should be—regionally processed protein,” Charfauros said.

“That means we must build the environment to spark that passion. In anything you do, you need to learn how to do it the right way.”



Wall Meat Processing plant, established in 1957. Photo Credit: Shannon Marvel



CC Allocations



Jenny Patterson
Manager of Office
Services

Each member who was on service in 2023 will receive a capital credit allocation notice (see example on right) in the mail during April. West River Electric is a not-for-profit organization owned by you, its member-owners. The revenue that covers day-to-day operating costs of the cooperative comes directly from members paying their monthly electric bills. Member rates provide:

- A sufficient amount of revenue to cover all operating costs,
- Funds for capital requirements, such as trucks, equipment and other items not funded by the RUS loans,
- Sufficient income to meet our financial needs set by our lenders,
- Revenue for additional capital items to keep pace with growth.

Revenue over the amount needed to keep the co-op operating is called a “margin.” These margins are allocated in the spring of each year based on the amount of electricity you have used for the previous year, (your patronage), and are called “capital credits.” The allocation notice you receive will state your balance before the 2022 allocation. In the middle, it shows the amount

that has been credited to your capital credit amount for the year 2023 for each service location you have on service. In the end, it will show your total capital credits allocated to date. These capital credits provide equity for the co-op and you. **As a reminder, this allocation notice cannot be cashed, nor can it be used as a credit on your energy account.**

On the notice, you will notice line items listed as “COOP” & “G&T.” The “COOP” line is for the margins derived strictly from West River Electric. The “G&T” line is for the margins that have been allocated by our power suppliers, Rushmore Electric Power Cooperative and Basin Electric Power Cooperative, (BEPC) of which we, West River Electric, are members. 2437400

Each year, the Board of Directors review the financial condition of West River Electric to determine if a capital credit, “retirement,” (payment of capital credits) will be possible for the year. If one is approved, you will find this information in the October edition of the Cooperative Connections. If you have further questions, please contact our offices at, Wall: 605.279.2135, or Rapid: 605.393.1500, or by email at info@westriver.coop. 8040300

0000114291 //.



West River Electric Association, Inc.

Your Touchstone Energy® Cooperative
 PO Box 412
 Wall, SD 57790-0412

Wall Office
 1200 W. Fourth Ave.
 PO Box 412
 Wall, SD 57790-0412
 (605) 279-2135

Visit us at:
www.westriver.coop
 24-Hour Automated Attendant:

Rapid City Office
 3250 E Hwy 44
 Rapid City, SD 57709
 (605) 393-1500

(605)791-6555

2242 1 AV 0.471 5 2242
 Jane Doe C-4
 John Doe
 1234 Capital Credit St
 RAPID CITY SD 57703-7081

1. Member's account number.
2. Total previous years amount.
3. Explanation of what it means to be a member of the cooperative and how capital credits work.
4. Current year allocation break down
 - a. Location: the number we assigned to your home location
 - b. Patronage: total of all electric bills paid in 2023
 - c. COOP & G&T: type of allocation
 - d. Capital Credit: amount of each allocation
5. Total credits accrued for 2023
6. The new balance of your totals after this year's allocation.



RE: Capital Credit # 123456

Page 1 of 1

Capital Credit Allocation Notice

THIS IS NOT A REQUEST FOR PAYMENT



Prior Years Balance: COOP 107.88
 G&T 28.88
 \$ 136.76



You are part owner of West River Electric Association, Inc. and one way your ownership is reflected is through capital credits -- your share of what's left over after the co-op pays all its expenses.



CAPITAL CREDIT STATEMENT Calendar Year 2023

Location	Patronage	Type	Capital Credits
1234	1,510.69	COOP	30.43
	1,510.69	G&T	90.35
Totals allocated for Jan. 1, 2023 - Dec. 31, 2023:			120.78

Every month, you pay your bill for electric service, and the co-op pays the expenses incurred in providing that service. Any funds left over at the end of the year -- margins -- provide equity for the co-op and you, the member. These funds are allocated each year based on the amount of electricity you have used for the previous year (patronage) and are called "capital credits." Allocated capital credits are considered "unretired" until the Board of Directors "retire" a portion of the capital credits, which normally happens annually in September.

We retain the unretired capital credits for two reasons: (1) as working capital to keep the co-op financially sound and to allow for emergencies, such as storm damage that might require replacement of poles and power lines; and (2) to retire debts and build equity in the co-op.

Be sure to keep the Cooperative informed of your correct address so that you continue to receive your notices and future refunds. If you move, we recommend that you update your current address with us every five years.



Total Unretired Capital Credits: COOP 138.31
 G&T 119.23
 \$ 257.54



Unretired capital credits cannot be applied to your past due or current energy bill or payment for any other services provided by your cooperative.

If you previously had a DCG Allocation, it has been combined into the G&T amount. If have any questions please feel free to contact us.

West River Electric exists for the purpose of providing its members with electric service on a non-profit basis. All excess margins are allocated back to its members.

KEEP THIS STATEMENT FOR YOUR RECORDS





CYBERSECURITY ON THE GRID

Frank Turner

frank.turner@sdrea.coop

Imagine sitting at your desk on a typical Monday morning. You have logged into your computer with coffee in hand, ready to tackle the day. But as you begin, your computer displays an ominous message: “Your files have been encrypted. Pay a ransom to regain access.” It’s not just your computer; your co-workers have received the same message. Overnight, the entire office has fallen victim

to a ransomware attack that has locked away critical data. Your office computers will remain unusable until a payment is made.

This scenario, among others, has become a primary concern for workplaces everywhere, including electric cooperatives. As a result, local co-ops are taking action in the cybersecurity space to prevent bad actors from disrupting the critical goal of delivering power that is safe, affordable and reliable to their members. Electric co-ops are focused

on enhancing cybersecurity resilience and readiness to defend against potential cyber threats.

Co-ops are routinely monitoring and managing cyber risks, working with federal and local law enforcement agencies and the North American Electric Reliability Corp. to protect critical infrastructure. By working as a network, co-ops are enhancing grid resilience, ensuring reliable electricity for their members.

According to an FBI Internet Crime Report, the U.S. reported more than \$12.5 billion in annual losses in 2023 due to cyberattacks like the one described. A significant number of these attacks target the elderly and vulnerable. When breaking down the losses by age group, individuals aged

20 to 29 accounted for \$360.7 million of the total losses, while those 60 and older incurred losses of \$3.4 billion in 2023 alone.

And it's not just about the money. These attacks also have the potential to undermine the stability of entire systems, including the electrical grid. This year, directors of the FBI, NSA, and CISA testified before Congress about Chinese Communist Party hacking groups that had gained access to the electric grid and other critical infrastructure to "wreak havoc and cause real-world harm to American citizens and communities."

"Many cyberattacks are conducted by criminals trying to steal money or collect a ransom," explains Chief Security and Compliance Officer Daniel Graham of Basin Electric Power Cooperative. "Nation-states

target electric utilities for different reasons. Some nation-states want to steal intellectual property. Others want to be able to disrupt our electric grid."

So how is it done? To execute their schemes, bad actors employ a long list of complex strategies and techniques, such as phishing, data breaches and malware to adversely impact their targets. Business email compromise, one of the most common techniques, occurs when an impostor poses as a legitimate business contact, seeking to steal sensitive information such as credit card numbers, bank account information or login credentials.

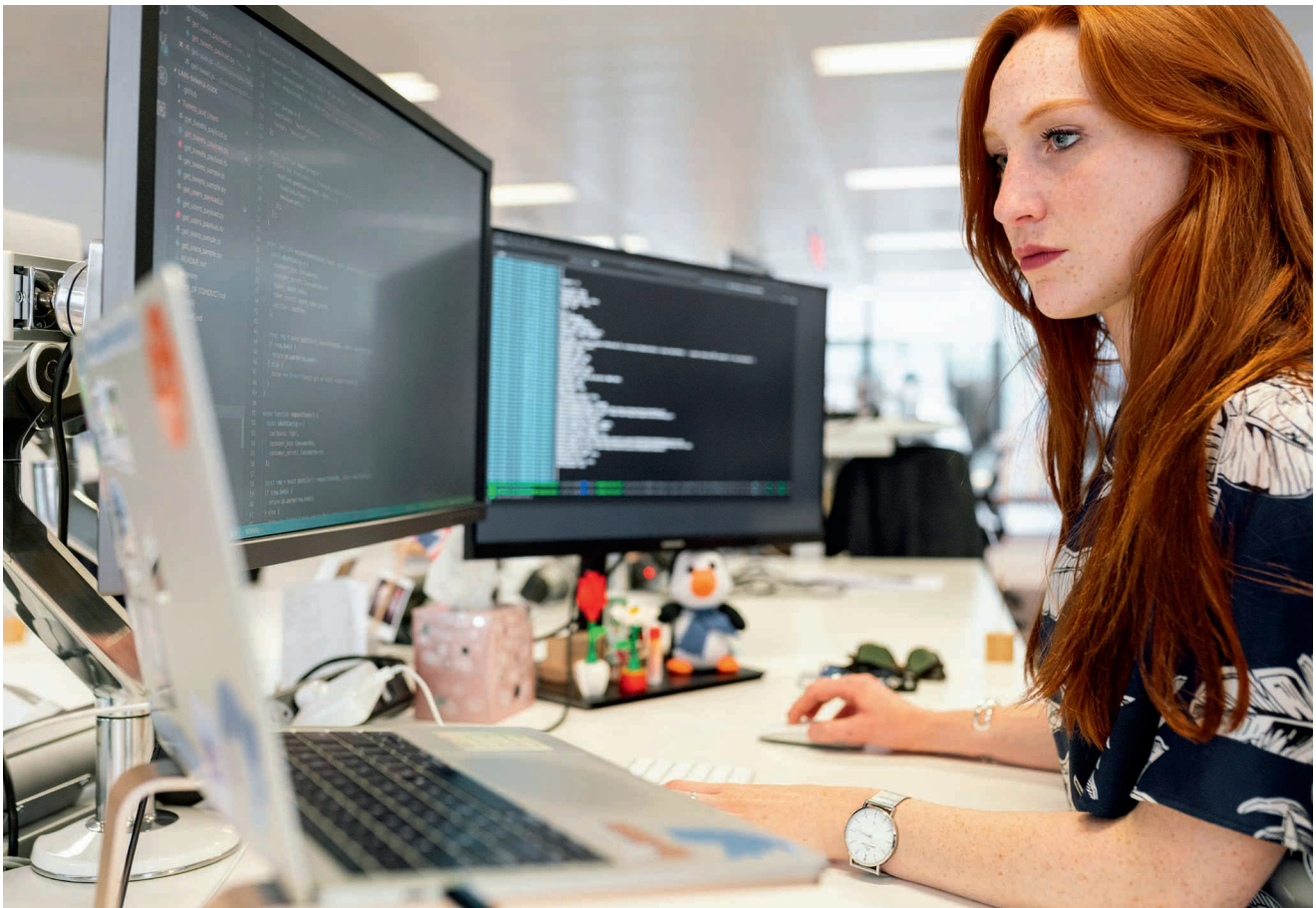
Luckily, co-ops are implementing a variety of tools, policies and training to help mitigate attacks and secure the grid. Programs like NRECA's Co-op Cyber Goals Program help co-ops build fundamental cybersecurity

measures, such as employee training, developing cyber incident response plans, and regular self-assessment. These strategies help co-ops reduce the risk of a successful cyberattack in the ongoing battle against cybercrime.

"Additionally, co-ops can conduct cybersecurity exercises to determine the effectiveness of current defenses and practice responses," Graham says.

Despite these efforts, the threat of a successful cyberattack persists, making vigilance an essential component of effective cybersecurity.

"If you see something suspicious, report it to your cooperative," explains Graham. "Electric co-ops are an essential part of our country's critical infrastructure. We can best protect our electric grid by working with each other."



EMPLOYEE SPOTLIGHT

SHINING THE LIGHT ON WEST RIVER ELECTRICS DEDICATED EMPLOYEES



JANNETTE THAYER
METERING ADMIN
ASSISTANT

HOW LONG HAVE YOU BEEN WORKING WITH WEST RIVER ELECTRIC?

I have been with WREA for 22 years.

WHAT DOES YOUR JOB ENTAIL?

I work in the metering department but also work closely with the billing and marketing departments. I make sure that all of our meters are reporting as they should, so that we have the readings we need for billing.

WHAT DO YOU LOVE MOST ABOUT WEST RIVER ELECTRIC?

I love the people I work with and the challenge of my work duties while figuring out issues with meters.

WHAT IS YOUR FAVORITE MEMORY SINCE STARTING WORK AT WEST RIVER ELECTRIC?

I have so many great memories, but they all involve the fun I've had with coworkers both during and after the workday.

HOW WOULD YOU DESCRIBE WEST RIVER ELECTRIC IN THREE WORDS?

Awesome Work Place

WHAT MOTIVATES YOU TO GET UP AND GO TO WORK EVERY DAY?

I truly enjoy what I do and who I work with. I am excited to get to work with so many great people that I consider to be family.



JOHN GARRIGAN
UTILITY MAINTENANCE

HOW LONG HAVE YOU BEEN WORKING WITH WEST RIVER ELECTRIC?

I have been with WREA for 14 years.

WHAT DOES YOUR JOB ENTAIL?

I do most of the custodial/maintenance for WREA. Including but not limited to cleaning, building maintenance, lawn care, sprinkler systems and snow removal.

WHAT DO YOU LOVE MOST ABOUT WEST RIVER ELECTRIC?

WREA has a very welcoming environment and appreciates its employees. Overall, I would say it's just a great place to work.

WHAT IS YOUR FAVORITE MEMORY SINCE STARTING WORK AT WEST RIVER ELECTRIC?

I would have to say my trip to Washington DC. Visiting the capitol and seeing all the history was amazing.

HOW WOULD YOU DESCRIBE WEST RIVER ELECTRIC IN THREE WORDS?

Motivating, productive and rewarding.

WHAT MOTIVATES YOU TO GET UP AND GO TO WORK EVERY DAY?

The great work environment.



West River Electric Association, Inc.

Your Touchstone Energy® Cooperative 

“Powering You For A Brighter Future”



Try our cost comparison tool at www.westriver.coop

STAY INFORMED AND EMPOWERED ON YOUR COOP'S RATE ADJUSTMENT

Our Mission is to serve our members' best interest.

LOCATE YOUR ACCOUNT NUMBER

If you locate your account number anywhere in this issue of West River Electric's *Cooperative Connections*, you will be a winner. There will be five account numbers placed randomly throughout the publication. If you spot your account number and notify our office before the 10th of the next month, you will receive a \$10 credit on your next bill.

WEST RIVER ELECTRIC OFFICE HOURS

RAPID CITY OFFICE

3250 E Hwy 44, Rapid City, SD
Monday-Friday 7 a.m. to 5 p.m.
605-393-1500

WALL OFFICE

1200 W 4th Ave, Wall, SD
Monday-Friday 7 a.m. to 5 p.m.
605-279-2135

A night depository is available at both offices for your convenience.

SERVICE AND BILLING QUESTIONS?

Contact 605-279-2135 or 605-393-1500 during office hours. E-mail us at info@westriver.coop for questions on your account.

OUTAGE OR EMERGENCY?

Contact 605-279-2135 or 605-393-1500 in the event of an outage or other emergency. Our calls are answered 24/7.



MAY 11, 2024
Cinco de Mayo Fiesta
 Falls Park
 Sioux Falls, SD

MAY 4
Jones County Pheasants
Forever Banquet
 Murdo, SD

MAY 10
Mother's Day Tea
 1 p.m.
 Spearfish Senior Center
 Spearfish, SD

MAY 11
Opening Day
 1880 Train
 Hill City, SD

MAY 11-12
Best of Hill City
 Main Street
 Hill City, SD

MAY 12
Hill City Senior Sunday
Breakfast
 8 a.m.
 Hill City Center
 Hill City, SD

MAY 12
Mother's Day Special
 1880 Train
 Hill City, SD

MAY 17
"Heart of the Hills" a
musical
 2 p.m.
 Spearfish Senior Center
 Spearfish, SD

MAY 18
Booth Day
 10 a.m.
 D.C. Booth Fish Hatchery
 Spearfish, SD

MAY 18
Fundraising Breakfast
 7:30 a.m.
 Spearfish Senior Center
 Hill City, SD

MAY 18
Grand Re-Opening & New
Artist Reception
 3 p.m.
 ArtForms Gallery
 Hill City, SD

JUNE 1
Spring Volksmarch
 Crazy Horse Memorial

JUNE 7-9
Gumbo Ridge Wagon Trail
Ride
 Murdo, SD

JUNE 8
Mt. Rushmore Rodeo
 Palmer Gulch Resort
 Hill City, SD

JUNE 8
Sportsman's Bash
 2 p.m.
 Weston County Senior Center
 Newcastle, WY
 605-440-1842

JUNE 9
1880 Train Old West
Shootout
 5 p.m.
 Hill City, SD

JUNE 14-15
Fine Arts In the Hills Show
& Sale
 Hill City, SD

JUNE 15
The Big Mick
 The Mickelson Trail
 605-673-5154

JUNE 15-16
Friends of the Library Book
Sale
 Hill City Public Library
 Hill City, SD

JUNE 20
Murdo Ranch Rodeo
 Murdo, SD

JUNE 20
Kadoka Ranch Rodeo
 Kadoka, SD

JUNE 21-22
Scavenger's Journey
 Yard sales, farmer's markets &
 specialty shops
 Wall, SD to Wagner, SD
 www.scavengersjourney.com

JUNE 21-22
Kadoka Reunion Weekend &
PRCA Rodeo
 Kadoka, SD

To have your event listed on this page, send complete information, including date, event, place and contact to your local electric cooperative. Include your name, address and daytime telephone number. Information must be submitted at least eight weeks prior to your event. Please call ahead to confirm date, time and location of event.

Note: Please make sure to call ahead to verify the event is still being held.