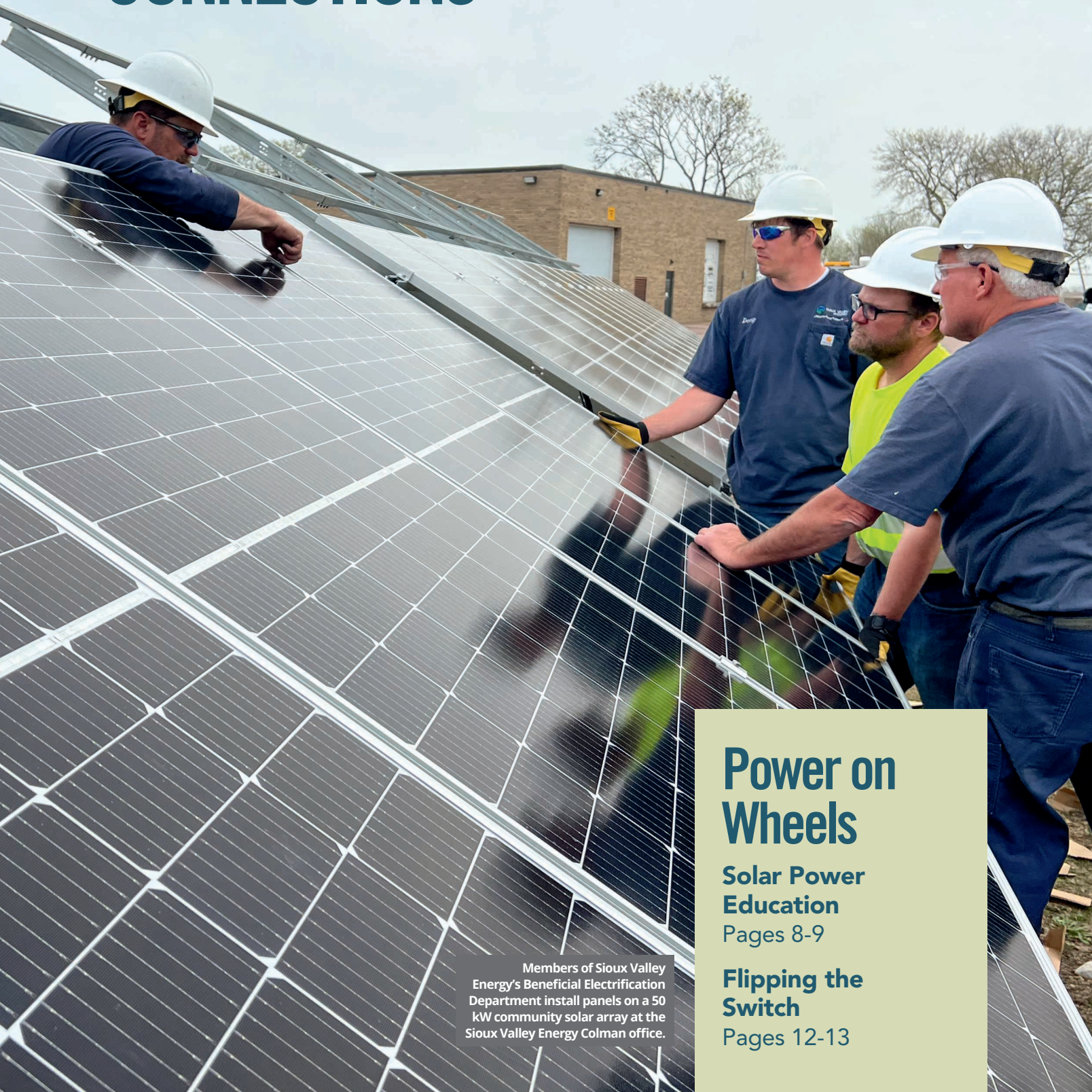


COOPERATIVE CONNECTIONS



Power on Wheels

**Solar Power
Education**

Pages 8-9

Flipping the Switch

Pages 12-13

Members of Sioux Valley Energy's Beneficial Electrification Department install panels on a 50 kW community solar array at the Sioux Valley Energy Colman office.

WHEEL OF FORTUNE



Dick Johnson
dick.johnson@westriver.coop

Wheel of Fortune has been one of the longest running TV game shows of all time. It has had Pat Sajak and Vanna White turning letters since 1975. In that show they turn spin a wheel, and if they choose the correct letter in the puzzle, they win the amount on the wheel along with a chance to solve the puzzle. Well, what does that have to do with the electrical business and my monthly column? Let me explain!

In May, the Rushmore Electric Manager's travelled to Basin Electric for our meeting. We had the opportunity to meet with Basin's senior staff. We spent another day touring the Coteau Freedom coal mine, Antelope Valley Station, and Dakota Gasification Company (DGC). What an amazing tour. Several of the attendees had never done a tour of these gems. They were aghast at what it takes to turn on the lights each day. The massive size and technical requirements are overwhelming. That tour showed the crucial role these organizations play in our lives every day, hour,

minute and second. One of the hardest puzzles ever to be solved.

However, our country continues to spin the wheel in hopes of solving the puzzle on reliable, affordable electricity each day. The National Energy Reliability Council (NERC) recently came out with their spin of the wheel as the best guess on how dependable our summer energy would be. They stated overall it was better than last summer. However, there were concerns about electricity shortages if we had a large heat wave occur across the country. NERC really hit the bankrupt placard on that spin.

Basin has spun the wheel since the 1960's and easily solved the puzzle without many letters revealed. They understand the importance of dependable baseload generation such as coal and natural gas resources. They also employ a strategy of having renewable energy in their portfolio. It just makes sense. But policy makers continue to spin the wheel hoping to hit their fortune with 100% renewable resources. Increasingly the money placards on the wheel are being taken off and being replaced with "bankrupt" placards or "lose a spin" placards. I fear this summer, and heading into winter, we could easily hit one of those placards on a spin and end up in a rolling blackout.

EPA recently released a new rule on carbon emitted from power plants. Where have we seen that vowel called before? They are touting carbon capture technology. That technology is currently only in its infancy and very costly. It is estimated it would reduce power output by 25%. If you take Antelope Valley Station with a 400 MW generation capability, and throttle it back 25%, that is a loss of 100MW. That loss of energy is enough to turn the bright game show lights on for approximately 80,000 average homes! What a guess that was Pat! 8081600

I do want to apologize up front if I have come off to the membership about being against renewable energy. I am not. However, all the contestants in this country need a better understanding of the game we are playing here when it comes to reliability. I love my electricity, and the tour I mentioned above brought it even more near and dear to my heart. Other foreign countries continue to build dependable baseload generation as they realize how important it is to business, the economy and especially national security. I do not feel national security is even considered in any of these scenarios.

Be sure to stay safe out there this summer. Take a moment to stay safe and avoid complacency.

West River Electric Association, Inc.
The Renewable Energy Cooperative
"Powering You For A Brighter Future"

CELEBRATING
INDEPENDENCE DAY

We will be closed Tuesday,
July, 4th.

Please call 605-279-2135 or 605-393-1500 to report an outage or in case of an emergency.

COOPERATIVE CONNECTIONS

WEST RIVER ELECTRIC

(USPS No. 675-840)

Our Mission:

We are safety conscious, community oriented, and the trusted energy expert for our member owners.

Our Vision:

We will achieve an ACSI score of 90 by 2024.

Our Values:

1. Safety
2. Accountability
3. Integrity
4. Innovation
5. Commitment to Community

This institution is an equal opportunity provider and employer.

Board President: Andy Moon

Board of Directors

Stan Anders – Vice President
 Jamie Lewis – Secretary
 Larry Eisenbraun – Treasurer
 Jerry Hammerquist
 Howard Knuppe
 Marcia Arneson
 Chuck Sloan
 Sue Peters

CEO and General Manager:

Dick Johnson –
dick.johnson@westriver.coop

Editor

Robert Raker –
robert.raker@westriver.coop

WEST RIVER ELECTRIC COOPERATIVE CONNECTIONS is the monthly publication for the members of West River Electric Association. Members subscribe to Cooperative Connections as part of their electric cooperative membership for \$6 a year. West River Electric Cooperative Connections purpose is to provide reliable, helpful information to electric cooperative members on matters pertaining to rural electrification and better living. Nonmember subscriptions are available for \$12 per year. Periodicals Postage paid at Wall, S.D., and at additional mailing offices. Postmaster: Send address changes to West River Electric Cooperative Connections, PO Box 412, Wall, SD 57790-0412.

Other correspondence to: West River Electric Cooperative Connections, 3250 E Hwy 44, Rapid City, SD 57703; telephone (605)393-1500, Exts. 6519, 6531 or 6522; fax (605)393-0275; e-mail robert.raker@westriver.coop.

6th Co-op Principle: Cooperation Among Cooperatives



Amanda Haugen
 Communications
 Specialist

Cooperation among Cooperatives is the sixth cooperative principle and being located in the heartland of South Dakota, West River Electric has exemplified just that. We have embraced the power of collaboration, fostering a strong network of cooperative partnerships to enhance our services and benefit you, the member-owner.

Cooperatives, at their core, understand that unity and collaboration are essential for achieving shared goals. West River Electric recognizes this principle as a guiding force in our day-to-day operations. From providing mutual aid and support on storm repair jobs to bouncing ideas off one another to helping start a new program, West River Electric actively seeks collaboration with other cooperatives both state-wide and nationally. The impact of coming together ensures all cooperatives can provide safe, affordable and reliable electricity to their member-owners.

One of the primary advantages of Cooperation Among Cooperatives is the ability to achieve economies of scale. By joining forces with other cooperatives, West River Electric can pool resources, negotiate better purchasing terms, and invest in infrastructure and technology that benefits all cooperative members. This collaboration enables WREA to provide safe, affordable and reliable electricity to its members while remaining competitive in an ever-evolving energy landscape.

Furthermore, West River Electric recognizes the value of member education and the exchange of knowledge. As I mentioned above, engaging with other cooperatives enables us to exchange expertise and gain knowledge in areas we may be struggling in. This collaborative learning environment empowers West River Electric to continuously improve its operations, adopt innovative technologies, and develop strategies that meet the unique needs of its members.

West River Electric's commitment to Cooperation Among Cooperatives extends beyond local cooperatives. WREA actively participates in regional and national cooperative networks, forming partnerships with other electric cooperatives nationwide. Through these cooperative networks, West River Electric can tackle common challenges, share experiences, and advocate for policies that promote growth and sustainability. 8020100

In conclusion, West River Electric serves as an inspiring example of a cooperative that lives up to the sixth cooperative principle: Cooperation Among Cooperatives. By actively engaging with other cooperatives, we strengthen our operations, enhance our services, and are able to provide affordable and reliable electricity. West River Electric's commitment to collaboration and unity demonstrates our dedication to serving our members and upholding the cooperative values.

Fireworks Safety Tips

Summer is synonymous with barbecues, parades and fireworks. The National Safety Council advises everyone to enjoy fireworks at public displays conducted by professionals, and not to use any fireworks at home. They may be legal but they are not safe.

In 2017, eight people died and over 12,000 were injured badly enough to require medical treatment after fireworks-related incidents. Of these, 50% of the injuries were to children and young adults under age 20. Over two-thirds (67%) of injuries took place from June 16 to July 16. And while the majority of these incidents were due to amateurs attempting to use professional-grade, homemade or other illegal fireworks or explosives, an estimated 1,200 injuries were from less powerful devices like small firecrackers and sparklers.

Additionally, fireworks start an average of 18,500 fires each year, including 1,300 structure fires, 300 vehicle fires and nearly 17,000 other fires.

Fireworks Safety Tips: If You Choose to Use Legal Fireworks

If consumer fireworks are legal to buy where you live and you choose to use them, be sure to follow the following safety tips:

- Never allow young children to handle fireworks
- Older children should use them only under close adult supervision
- Never use fireworks while impaired by drugs or alcohol
- Anyone using fireworks or standing nearby should wear protective eyewear
- Never hold lighted fireworks in your hands
- Never light them indoors
- Only use them away from people, houses and flammable material
- Never point or throw fireworks at another person
- Only light one device at a time and maintain a safe distance after lighting
- Never ignite devices in a container
- Do not try to re-light or handle malfunctioning fireworks
- Soak both spent and unused fireworks in water for a few hours before discarding

- Keep a bucket of water nearby to fully extinguish fireworks that don't go off or in case of fire
- Never use illegal fireworks

Sparklers Are Dangerous

Every year, young children can be found along parade routes and at festivals with sparklers in hand, but sparklers are a lot more dangerous than most people think.

Sparklers burn at about 2,000 degrees – hot enough to melt some metals. Sparklers can quickly ignite clothing, and children have received severe burns from dropping sparklers on their feet. According to the National Fire Protection Association, sparklers alone account for more than 25% of emergency room visits for fireworks injuries. For children under five years of age, sparklers accounted for nearly half of the total estimated injuries. Consider using safer alternatives, such as glow sticks, confetti poppers or colored streamers.



Call Before You Dig!

Dixie Koistinen

Dixie Koistinen advises diggers to call 811 before digging. This is a great tip for anyone doing construction or yard work this summer. Dixie is the daughter of Jerome and Lisa Koistinen from Lake Norden, S.D., members of H-D Electric.

Kids, send your drawing with an electrical safety tip to your local electric cooperative (address found on Page 3). If your poster is published, you'll receive a prize. All entries must include your name, age, mailing address and the names of your parents. Colored drawings are encouraged.

Summer DESSERTS

VICKY'S RHUBARB CAKE

Ingredients:

- 1 egg
- 1 cup sugar
- 1 cup cream (sweet or sour)
- 1 1/2 cups flour
- 1 tsp. soda
- 1/4 tsp. cinnamon
- 2 cups rhubarb (slice thin)

METHOD

Mix in order. Grease and flour pan. Pour batter into pan and sprinkle 1 cup brown sugar, 1/2 cup nuts, and 1/2 cup chocolate chips over the top. Bake at 350°F for 50 minutes.

Vicky Hoffman
South Dakota

CHERRY CLOUD 9 DESSERT

Ingredients:

- 1 white cake mix
- 1 (3 oz.) pkg. cherry jello
- 1 (8 oz.) carton of Cool Whip
- 1 (24 oz.) can cherry pie filling

METHOD

Bake 1 white cake mix in 9x13" pan according to directions. Poke holes in cake and pour in 1 (3 oz.) pkg. cherry jello made with only 1 1/2 cups water. Refrigerate.

When this is cool, cover with 1 (8 oz.) carton of Cool Whip. Gently spoon on 1 (24 oz.) can of cherry pie filling. Refrigerate and serve.

This is a pretty red and white dessert to serve during holiday gatherings.

Jane Ham
Rapid City, S.D.

EASY RASPBERRY MOLTEN CAKES

Ingredients:

- 4 oz. semi-sweet chocolate
- 1/2 cup (1 stick) butter
- 4 tsps. raspberry extract
- 1 cup confectioners' sugar
- 2 eggs
- 1 egg yolk
- 6 tbsp. flour
- Raspberry Sauce (recipe follows)

Raspberry Sauce:

- 1 package (10 ounces) frozen raspberries in juice, thawed
- 1/2 teaspoon raspberry extract

METHOD

Preheat oven to 425°F. Butter 6 (6 oz.) custard cups or soufflé dishes. Place on baking sheet.

Microwave chocolate and butter in large microwavable bowl on HIGH 1 minute or until butter is melted. Stir with wire whisk until chocolate is completely melted. Stir in raspberry flavor and vanilla. Stir in sugar until well blended. Whisk in eggs and yolk. Stir in flour. Pour batter into prepared custard cups.

Bake 10 to 14 minutes or until sides are firm but centers are soft. Let stand 1 minute. Carefully loosen edges with small knife. Invert cakes onto serving plates.

For the Raspberry Sauce, mix raspberries and raspberry extract until well blended. Serve with cakes.

mccormick.com

Please send your favorite recipes to your local electric cooperative (address found on Page 3). Each recipe printed will be entered into a drawing for a prize in December 2023. All entries must include your name, mailing address, phone number and cooperative name.

FOR THE KIDS SCHOOL SUPPLY DRIVE

DATES:

AUGUST 1-31



West River Electric Association, Inc.

Your Touchstone Energy® Cooperative

"Powering You For A Brighter Future"
this institution is an equal opportunity provider and employer

605-791-6502

Sallie.traver@westriver.coop

DROP OFF LOCATIONS:

**WALL OFFICE
RAPID OFFICE**



For the Kids School Supply Drive

As summer comes to a close, students across West River Electric's service are gearing up for a new school year. While this time of year is often filled with excitement and anticipation, it can also bring challenges for local families who struggle to afford the necessary supplies for their children.

Our LEAD's group at West River Electric thought it would be a good idea to launch a school supplies drive, "FOR THE KIDS". Our goal is to collect and distribute notebooks, pencils, pens, tissue, and other essential items to students in need, ensuring that every child has the tools they need to succeed in the classroom.

Access to school supplies has a direct impact on a student's ability to learn. Children who have the right materials are more likely to participate in class and complete their homework. Additionally, students who have access to the right supplies are more likely to have higher self-esteem and feel more confident in their abilities.

The 7th Coop Principle is Commitment to Community. West River Electric employees believe in giving back to our communities as it brings a sense of purpose and fulfillment. It's not just about the supplies themselves. The act of giving can have a positive impact on the giver and when we all come together to help our young members of the community, together we can make a difference in a child's life.

West River Electric is asking for your support to make this drive a success. Every little bit helps, and every item donated will make a difference in the life of a student in need.

It's easy to get involved. Just drop aor Wall offices. You can

also spread the word to your friends, family, and co-workers to encourage their participation.

Let's work together to ensure that every local student has the tools they need to succeed. Join us in the power of giving and make a difference in the life of a child. 2452300

Together, we can make a difference!

Energy Efficiency Tip of the Month

Did you know ceiling fans can make a room feel 4 degrees cooler? To save energy through ceiling fan use, remember to raise your thermostat a few degrees while fans are turned on. Ceiling fans can help improve comfort year-round. In the summer, operate ceiling fans in a counterclockwise direction. Reverse the direction to clockwise during winter months and set fans on a low speed so warm air can circulate from the ceiling to the lower levels of the room. Remember, ceiling fans cool people, not spaces. Be sure to turn them off when you leave the room.

Source: Dept. of Energy



EMPLOYEE SPOTLIGHT

SHINING THE LIGHT ON WEST RIVER ELECTRICS DEDICATED EMPLOYEES



MIKE OYEN

HOW LONG HAVE YOU BEEN WORKING WITH WEST RIVER ELECTRIC?

I have been with WREA for 17 years.

WHAT DOES YOUR JOB ENTAIL?

I order and receive material and lay up material for jobs.

WHAT DO YOU LOVE MOST ABOUT WEST RIVER ELECTRIC?

The people I work with and the involvement to the community.

WHAT IS YOUR FAVORITE MEMORY SINCE STARTING WORK AT WEST RIVER ELECTRIC?

There are so many its hard to have a favorite.

HOW WOULD YOU DESCRIBE WEST RIVER ELECTRIC IN THREE WORDS?

Excellent work environment

WHAT MOTIVATES YOU TO GET UP AND GO TO WORK EVERY DAY?

Knowing I'm going to a job I enjoy.



SEAN BESTGEN

HOW LONG HAVE YOU BEEN WORKING WITH WEST RIVER ELECTRIC?

I have been proudly serving West River Electric for the past 3 years.

WHAT DOES YOUR JOB ENTAIL?

My job entails solving complex problems using the power of engineering, ensuring efficient power distribution, and developing new electrical systems.

WHAT DO YOU LOVE MOST ABOUT WEST RIVER ELECTRIC?

What I love most about West River Electric is the strong sense of community among its members and coworkers. We work together as a team, supporting each other to achieve success.

WHAT IS YOUR FAVORITE MEMORY SINCE STARTING WORK AT WEST RIVER ELECTRIC?

One of the most memorable experiences I've had at West River Electric is being a part of the Member Appreciation days. It's a special occasion to dedicate time expressing gratitude and showing our members how much we value them. Seeing the smiles on their faces and having the opportunity to personally connect with the people we serve is truly rewarding.

HOW WOULD YOU DESCRIBE WEST RIVER ELECTRIC IN THREE WORDS?

"Reliable, Innovative, and Community-oriented."

WHAT MOTIVATES YOU TO GET UP AND GO TO WORK EVERY DAY?

What motivates me is the impact we have on our members' lives. Knowing that our efforts contribute to delivering reliable power and enhancing the community drives my passion as an electrical engineer at West River Electric.



POWER ON WHEELS

West Central Electric Cooperative's solar trailer serves as an interactive exhibit showcasing solar power generation in action for members. Equipped with a built-in generator, battery storage unit, inverter, and six rooftop solar arrays, the trailer is a great resource for public outreach and education efforts in South Dakota.

Solar trailer takes renewable education on the road

Frank Turner

frank.turner@sdra.coop

Solar panels are creating a buzz in the energy industry. Every day, co-op employees around the state answer an ever-growing list of questions, such as “Can solar save me money on my energy bill?” and “Are solar panels a reliable source of energy?”

Addressing increasing public interest, West Central Electric Co-op, serving towns such as Murdo and Kennebec, has developed an innovative approach to public outreach regarding solar panels. Their solution: a solar trailer — a portable structure designed to inform the public about the efficiency, pros and cons of solar panels.

“West Central Electric has approxi-

mately 3,700 members and I get two or three calls a month from our members asking about solar power,” said Jessie Tucker, the co-op’s member services manager.

Tucker noted that the recent surge in solar power interest isn’t limited to West Central. Co-ops throughout the state have been fielding similar inquiries. So, when the concept of a solar trailer was introduced in 2021, several nearby co-ops, including Rushmore Electric Power, were quick to get on board.

“We thought, wouldn’t it be great if we had something that we could show to the membership and explain how solar panels work and go from there,” said Tucker. “We envisioned the trailer as a resource that could be utilized throughout western South Dakota, if not the entire state.”

With support from surrounding co-ops, the trailer was completed in June 2022. Although the trailer is a work in progress, it has already been showcased at several co-op outreach events over the past year, including Black Hills Electric’s Co-op Day and more.

The solar trailer serves as an interactive exhibit where members can step inside for a first-hand experience. Upon pressing a button, the six rooftop solar arrays activate and start generating a total of 1.92 kilowatts of energy directly from the trailer’s roof. Apart from solar panels, the trailer is equipped with a built-in generator, a battery storage unit, and an inverter that converts power from direct current (DC) to alternating current (AC).

The trailer, according to Tucker, highlights the benefits of a diversified approach to South Dakota’s energy mix. For a reliable and dependable energy grid, renewable sources such as solar need to be paired with other forms of power generation.

“What we are really trying to com-

municate is that you can't fully rely on distributed generation, whether it's solar or wind," Tucker explained. "For reliability and safety, it's important to consider all available energy sources. Solar power has its limitations, especially when the sun isn't shining or during the night."

The introduction of a solar trailer comes as co-ops across the state are in the midst of their own solar initiatives. Just last month, Sioux Valley Energy completed its own solar project that permits its members to purchase a 20-year subscription to the power output from a newly constructed 140-panel solar array located in Colman, S.D. The project allows members who are passionate about renewable energy a direct route to purchase solar power through their local co-op.

"A lot of people are very interested in solar power, but they don't want to go through the process of using up land and roof space," said Ben Pierson, manager of beneficial electrification for Sioux Valley. "Members aren't interested in constructing these projects themselves, so our solar

project offers those members an alternative way to get involved in solar."

More than 30 members participate in the subscription program, and because the project was entirely financed by the participating members, it won't impact other members of the co-op.

"This project was one hundred percent funded by the members that are purchasing the output of those panels," said Pierson. "This project allows these members to see a local, physical solar asset in their community that is working for them and is credited on their bill each. So really



The solar trailer has been featured at several co-op public outreach events.

our focus with renewable is really about member choice."

The landscape of renewable energy is vast and ever-changing and every co-op is planning their own approach, but with resources like the solar trailer, tools for education and engagement are within reach for members wanting to learn more.



The interior of the solar trailer is equipped with battery storage and outlets – powering everyday electrical appliances, such as a hairdryer.



Save the Date

SEPT. 22ND, 2023

MEMBER
APPRECIATION
DAY

11AM-7PM

KIDS ENTERTAINMENT, BUCKET TRUCK
RIDES, AND MUCH MORE!

Construction Update



Matt Schmahl
Construction
Project Manager

With construction season in full swing, the linemen at West River Electric will soon begin another reconstruction project along Highway 34. This project will replace some aging single-phase overhead infrastructure. The location of the next build will begin at the intersection of Highway 34 and Nine Mile Road, then head east for two miles, finishing at the intersection of Highway 34 and 137th place.

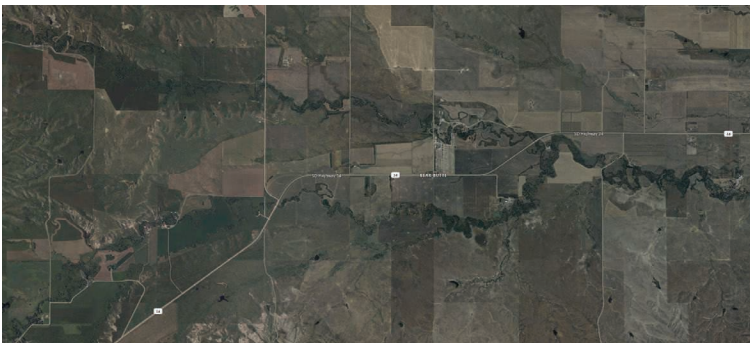
The overhead line construction will generally be located in the same route as the existing line. The old design saw distances between poles of over 300'. The new design typically sees distances around the 250' range between poles. We have elected to increase the pole class or "size" from the typical class 6 pole, which is currently present, to a more robust class 4 pole. The reduction in the distance between the poles and the larger pole class dramatically increases the strength of the line, which is needed during extreme weather events.

We have also elected to install what has become our standard overhead conductor (wire). This type of T2 conductor is a pair of wires twisted together. Installing this type of wire allows more members to be connected to the line due to the larger conductor size. The most significant advantage of using this conductor is its ability to shed ice loading during winter storms. West River Electric has used this type of wire for an extended period of time and has had great success with its durability thus far. Using larger pole sizes with substantially shorter span lengths and T2 conductor will significantly increase the resiliency of our system.

While this project is classified as a total rebuild of the existing infrastructure, the overall appearance of the line will remain very similar to what's currently in use. The new line will have two wires, only larger than previously used, and the pole framing will be similar to what you typically see.

This infrastructure rebuild will aid in restoration efforts during outages and allow for more switching options in the future as we continue to see growth in the area. 8051000

Once this project is underway, West River Electric's line crews will work alongside the right of way. In some areas, access for the rebuild will only be from the Highway side of the line. If you happen to be in the vicinity of this project and come across the line crews working, please be mindful of the activities that are present and reduce your speed through the construction area.





FLIPPING THE SWITCH

Third generation ranchers Ken and Kathleen Meier stand by one of the first electric utility pole installed on their ranch.

The Meier Family and Illuminating Rural South Dakota

Frank Turner
frank.turner@sdrea.coop

In the rural heartland of Firesteel, S.D., a transformational moment still echoes in the minds of third-generation ranchers Ken and Kathleen Meier. Over a span of 56 years on their farmstead, they have run cattle, reared horses, and even raised two children. After all

of those years, however, they still vividly remember the moment when electricity illuminated their rural community for the first time in the early 50s.

It's safe to say, their memories go back a long way. And yet, their bond with their home extends even further, reaching back a century to when their families were still

establishing roots in the frontier of the rural prairie.

Ken recalls the unlikely story which brought his grandpa, Anton Meier, from Iowa to the captivating, rolling landscape near Timber Lake, S.D., in 1923.

“Well, my grandpa was ornery when he had a bit too much to drink,” said Ken. “Anyway, after a night of drinking, they threw him out of a bar in Iowa, so he crawled into a train car for a nap. When he woke up, he was in South Dakota.”

According to Meier, his grandpa Anton quickly fell in love with the state and decided to relocate his

family to a new frontier near Timber Lake. In a coincidental twist of fate, Kathleen's family also settled in the same area around the same time. Unlike Anton's serendipitous journey,

Kathleen's grandfather, Frank Holzer, had a more traditional approach.

"My grandpa didn't get a free ride," laughed Kathleen. "He came down with our family from North Dakota with a horse and a milk cow tied to the back of the family's covered wagon."

When their families first settled the area, it was the era of kerosene lamps, horses and hard work. Yet in their childhood, both Ken and Kathleen witnessed the transition from kerosene lamps to electric light bulbs, a change that would propel their families and their communities forward.

"I must have been 9 or 10, but I remember when Moreau-Grand put our line up," Ken reminisced. "The memory of those first poles being driven into the ground by a couple of guys with an old International Truck has stuck with me. It was just something you don't forget."

Today, those original poles placed in the ground more than 70 years ago still stand tall on their ranch. Kathleen, too, recalls the transformative impact they had.

"I was about the same age when we first wired our house," said

Kathleen. "I remember how fun it was to just turn the lights on and have bright lights."

However, the electrification of their neighborhood brought more than just the novelty of flipping a switch. Kathleen's family promptly modernized their home. Their stove and fridge transitioned from kerosene to electric, and they even invested in a milking machine. The arrival of electricity didn't just bring about change; it revolutionized daily life on the ranch, making it cleaner and more efficient.

"Our old washing machine ran on a gas engine," said Kathleen. "You had to stomp on a pedal to get that motor started. It smoked up the entire house. Once we had electricity all we had to do was plug it in."

Progress didn't stop at the washing machine. "It didn't take long for things to change," added Ken. "I remember when I was about thirteen, my neighbor purchased the first television in the neighborhood, so everything happened fast. We would all go to watch whatever was on."

The transition has continued to benefit the Meier family. Today, their son, Kent Meier, works in the power industry with Border States Electric, a company that sells electrical equipment, tools and appliances. Their daughter, Cindy Lindskov has carried on the family tradition as a fourth-generation rancher in Isabelle, S.D., a town conveniently located just a stone's throw away from her parents.

It's amazing how much has changed over the years," said Ken. "Since the day we first got electricity, Moreau-Grand has done a great job of keeping our light on and burning bright."



One of the original utility poles on Ken and Kathleen Meier's land was created in 1950, yet it still functions to this day.

Ag Appreciation Day at the Central States Fair



When:

**August 22nd
4pm-6pm**



Where:

**Kjerstad
Event Center
-915 Centre St.**



What:

**-Free Meal
-Discounted Rodeo
Tickets*
-RSVP required**

**see RSVP site for more details*



RSVP here



Smart Hub Web Redesign

You've heard the employees of West River Electric talk about Smart Hub and all its great features. From managing your usage, to updating your information, to making payments on your account, Smart Hub can do it all.

On July 10th, Smart Hub Web will be getting a gentle facelift, or redesign, to be just a little more user friendly. You will still have the convenient experience managing your usage right from the comfort of your home.

Again, this is just for when you log onto Smart Hub using a computer, not the mobile app. Right now, there are no plans on the mobile app getting a facelift. Please call our office with any questions. 3681500

LOCATE YOUR ACCOUNT NUMBER

If you locate your account number anywhere in this issue of West River Electric's *Cooperative Connections*, you will be a winner. There will be five account numbers placed randomly throughout the publication. If you spot your account number and notify our office before the 10th of the next month, you will receive a \$10 credit on your next bill.

WEST RIVER ELECTRIC OFFICE HOURS

RAPID CITY OFFICE

3250 E Hwy 44, Rapid City, SD
Monday-Friday 7 a.m. to 5 p.m.
605-393-1500

WALL OFFICE

1200 W 4th Ave, Wall, SD
Monday-Friday 7 a.m. to 5 p.m.
605-279-2135

A night depository is available at both offices for your convenience.

SERVICE AND BILLING QUESTIONS?

Contact 605-279-2135 or 605-393-1500 during office hours. E-mail us at info@westriver.coop for questions on your account.

OUTAGE OR EMERGENCY?

Contact 605-279-2135 or 605-393-1500 in the event of an outage or other emergency. Our calls are answered 24/7.

REGISTER TO WIN!

Bring this coupon and mailing label to the Touchstone Energy® Cooperatives booth at Dakotafest or the South Dakota State Fair to win a prize!

Your Phone Number: _____

Your E-mail Address: _____



July 14-16
Badlands Astronomy Festival
25216 Ben Reifel Road
Interior, SD
605-433-5243

To have your event listed on this page, send complete information, including date, event, place and contact to your local electric cooperative. Include your name, address and daytime telephone number. Information must be submitted at least eight weeks prior to your event. Please call ahead to confirm date, time and location of event.

JUNE 23-25
46th Annual Main Street Arts & Crafts Festival
Centennial Park
Hot Springs, SD

JULY 1
Hill City's Annual Star-Spangled Celebration
8 a.m.
Hill City, SD
605-574-2368

JULY 4
Philip VFD Firework Display
Lake Waggoner
Philip, SD

JULY 7-8
Buffalo Gap Blow Out Rodeo
6 p.m.
Buffalo Gap, SD
605-890-1533

JULY 8-9
Brookings Summer Arts Festival
Brookings, SD
605-692-2787

JULY 12
Tracy Area Gardens & Quilts Tour
2 p.m.
Tracy, MN

JULY 13-16
Pioneer Days
White, SD
605-690-4458

JULY 14-16
Burke Stampede PRCA Rodeo
Burke, SD
605-830-2083

JULY 15
Huron MS Walk/Run
8 a.m.
Lake Byron
Huron, SD
605-350-5922

JULY 15-16
Charles Mix Saddle Club SDRA Rodeo
Geddes, SD
605-680-2763

JULY 21-23
Winner Elks 54th Annual Rodeo
Winner, SD

JULY 28-29
Farley Fest
Lake Farley Park
Milbank, SD

JULY 29
BBQ Pit Row and Car Show
Winner, SD

JULY 30
Bergen Threshing Bee
9 a.m.
Bristol, SD

AUG 7
Food Truck Party-Vacation Bible School
Rapid Valley UMC
5:30 p.m.
Rapid Valley, SD

AUG 13-14
Twin Brooks Threshing Show
Featuring Allis Chalmers
Twin Brooks, SD

AUG 27
SGT. Colton Levi Derr Foundation Fundraiser
Barrels, Poles, Breakaway, Team Roping
New Underwood, SD
605-391-8733

SEPT 4
Hidewood Valley Stream Threshing Show
Steam Whistle Blows
1 p.m.
47236 183rd St
Clear Lake, SD

SEPT 29-30
Junkin' Market Days
Ramkota Exhibit Hall
Sioux Falls, SD

Note: Please make sure to call ahead to verify the event is still being held.