

# COOPERATIVE CONNECTIONS



## Forecasting the Future

**Basin Electric's Vision  
for Reliable Energy**  
Pages 8-9

**Wind Energy  
Association Changes  
Name, Advocates For  
All Renewables**  
Pages 12-13

# Passing the Torch: Signing Off as CEO



**Dick Johnson**  
CEO/GM

Well, what do I say! This will be the final column for me as the CEO and General Manager of West River Electric. After 30 plus years in the cooperative world, 27 at West River, and 14 years as your CEO, it is time for me to retire. It is time to let younger people take the steering wheel and for me to spend more time with my wife and family that I have probably neglected over the years. 845401

I started as the Manager of Finance at West River. My goal then was to always ensure the financial, billing, and administrative end of West River was working efficiently to be certain we were providing reliable, affordable power to our members. Moving up to the role of CEO of the cooperative, I remained committed to doing the same by providing reliable, affordable power while delivering world class service to our member-owners. It has not been a small task at times, but one that I felt with the team around me, we have delivered on that goal.

I would like to thank you, the members, for allowing me to manage your co-op over those years. There is no better business model to provide electricity to our communities than the cooperative model. We may not have always agreed, but we always came away respecting each other's opinions

and views. That is what made it so easy to manage.

The Board of Directors of your cooperative deserve a thank you as well. They had the trust in me to name me as CEO back in February 2010. I remember the evening they interviewed me the summer before as a severe thunderstorm was moving through the area. We continued the interview in nasty conditions, and afterward I wondered if that storm was a sign of storms ahead with the Board. There were none! I was so blessed to have had the Board members I had over the years. I was very fortunate, and you, the members, are as well.

And how about those employees! I would be lying if I didn't say we had the best group of employees every co-op or CEO would love to have. They are dedicated to our mission, understand co-ops and our unique business model, respond to member questions, and spend countless hours on outage response. They do this, always understanding what truly matters, providing reliable, affordable electricity to the member at the end of the line. I always told them "do the right thing, always." I think they delivered on those 5 words.

And the real reason I have been blessed; my family. Thanks Pam, Amanda, and Shayla for always supporting me throughout this journey. You spent many nights alone when I was at a meeting, working late, or helping during a storm job. You never wavered in your faith that the Lord was pointing us in the right direction. We could not have been luckier either than to live and have our children grow up in the Wall community. I have truly been blessed! 944600

I figured I wrote 179 columns to you the members. That is about 90,000 words of wisdom, knowledge, updates, and information you had to endure! Now that responsibility will be on Robert Raker, our newly appointed CEO. I can assure you that Robert and his team will do a great job managing this co-op and our industry through these trying times and take West River to the next level.

Thanks again to the members, Board, employees, and my family for your unwavering support throughout my tenure here at West River Electric.

With warm regards and heartfelt gratitude, I sign off one last time!

**From our lines to your homes, we wish you a holiday season of Joy and a New Year of endless possibilities.**

From all of us at  
**West River Electric Association, Inc.**

Your Touchstone Energy® Cooperative 

*"Powering You For A Brighter Future"*

**OUR OFFICES WILL BE CLOSED THE FOLLOWING DATES:**

*Tuesday Dec. 24th | All day*  
*Wednesday Dec. 25th | All day*  
*Tuesday Dec. 31st | 11am-5pm*  
*Wednesday Jan. 1st | All day*

## COOPERATIVE CONNECTIONS

### WEST RIVER ELECTRIC

(USPS No. 675-840)

#### Our Mission:

To serve our members' best interest.

#### Our Vision:

We will be a high performing co-op.

#### Our Values:

1. Safety
2. Accountability
3. Integrity
4. Innovation
5. Commitment to Community

This institution is an equal opportunity provider and employer.

**Board President:** Andy Moon

#### Board of Directors

Stan Anders – Vice President  
 Jamie Lewis – Secretary  
 Chuck Sloan – Treasurer  
 Larry Eisenbraun  
 Peter Blake  
 Marcia Arneson  
 Steven Edoff  
 Sue Peters

#### CEO and General Manager:

Dick Johnson –  
[dick.johnson@westriver.coop](mailto:dick.johnson@westriver.coop)

#### Editor

Amanda Haugen –  
[amanda.haugen@westriver.coop](mailto:amanda.haugen@westriver.coop)

WEST RIVER ELECTRIC COOPERATIVE CONNECTIONS is the monthly publication for the members of West River Electric Association. Members subscribe to *Cooperative Connections* as part of their electric cooperative membership for \$6 a year. West River Electric Cooperative Connections purpose is to provide reliable, helpful information to electric cooperative members on matters pertaining to rural electrification and better living. Nonmember subscriptions are available for \$12 per year. Periodicals Postage paid at Wall, S.D., and at additional mailing offices. Postmaster: Send address changes to West River Electric Cooperative Connections, PO Box 412, Wall, SD 57790-0412.

Other correspondence to: West River Electric Cooperative Connections, 3250 E Hwy 44, Rapid City, SD 57703; telephone (605)393-1500, Exts. 6564, 6531 or 6522; fax (605)393-0275; e-mail [amanda.haugen@westriver.coop](mailto:amanda.haugen@westriver.coop).



# Construction Update



**Matt Schmahl**  
 Construction  
 Project Manager

rebuild in the Plainview and Highway 34 areas. I'm pleased to report that the project has been successfully completed, and we are now moving forward with another overhead rebuild identified in our four-year work plan.

This new project involves rebuilding nearly six and half miles of overhead line and upgrading approximately 0.3 miles of underground infrastructure in the Owanka area, along the Base Line Road corridor. The decision to prioritize this line was based on a thorough assessment of its age and overall condition. Given its condition and the potential for increased maintenance needs, it was identified as a candidate for reconstruction. By addressing these issues now, we can

I wanted to share an update on our ongoing infrastructure improvements as part of our commitment to proactive system maintenance and reliability. You may recall my column from a few months ago about the three-phase overhead

ensure long-term service reliability and reduce the risk of costly emergency repairs in the future.

The new infrastructure design leverages best practices to maximize resilience and efficiency. We've selected T2 wire, or twisted conductor, for its strength and ability to withstand adverse weather conditions. Additionally, shorter span lengths are being implemented throughout the overhead sections to evenly distribute mechanical stress, reducing the risk of line sagging or breakage and enhancing overall durability. 1082101

This project will continue over the next few months, with its completion largely dependent on winter conditions. Harsh winter weather may impact construction progress, but we will adapt as needed to ensure the work is completed safely and efficiently.

In summary, this overhead rebuild highlights our ongoing commitment to enhancing infrastructure to improve both system efficiency and resilience. I look forward to sharing updates on this and other projects in future columns.

# Snow Safety

There is no end to the terms for “really big snowstorm,” and those terms come in handy, particularly in America’s snowiest cities. Just check out these average annual snowfall totals in towns of at least 10,000 residents, according to the Farmer’s Almanac:

Sault Ste. Marie, Michigan – 119.3 inches  
Syracuse, New York – 114.3 inches  
Juneau, Alaska – 93.6 inches  
Flagstaff, Arizona – 87.6 inches  
Duluth, Minnesota – 83.5 inches  
Erie, Pennsylvania – 80.9 inches  
Burlington, Vermont – 80.2 inches  
Muskegon, Michigan – 79.3 inches  
Casper, Wyoming – 77 inches  
Portland, Maine – 70 inches

But with really big snow storms – and even everyday, run-of-the-mill snowfalls – comes a risk of death by shoveling. Nationwide, snow shoveling is responsible for thousands of injuries and as many as 100 deaths each year.

So, why so many deaths? Shoveling snow is just another household chore, right?

Not really, says the American Heart Association. While most people won’t have a problem, shoveling snow can put some people at risk of heart attack. Sudden exertion, like moving hundreds of pounds of snow after being sedentary for several months, can put a big strain on the heart. Pushing a heavy snow blower also can cause injury.

And, there’s the cold factor. Cold weather can increase heart rate and blood pressure. It can make blood clot more easily and constrict arteries, which decreases blood supply. This is true even in healthy people. Individuals over the age of 40 or who are relatively inactive should be particularly careful.

**National Safety Council recommends the following tips to shovel safely:**

- Do not shovel after eating or while smoking.
- Take it slow and stretch out before you begin.
- Shovel only fresh, powdery snow; it’s lighter.
- Push the snow rather than lifting it.
- If you do lift it, use a small shovel or only partially fill the shovel.

- Lift with your legs, not your back.
- Do not work to the point of exhaustion.
- Know the signs of a heart attack, stop immediately and call 911 if you’re experiencing any of them; every minute counts.

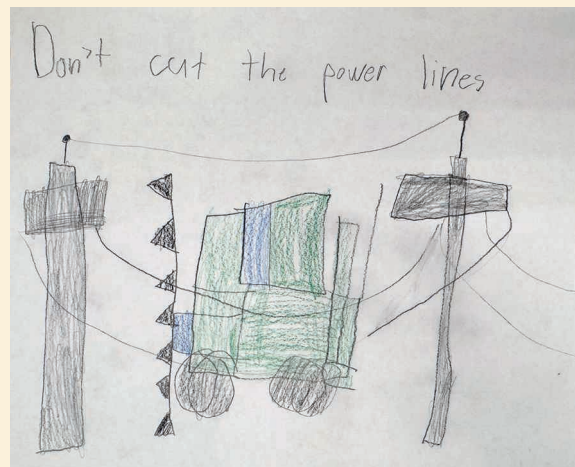
Don’t pick up that shovel without a doctor’s permission if you have a history of heart disease. A clear driveway is not worth your life.

### Snow Blower Safety

In addition to possible heart strain from pushing a heavy snow blower, stay safe with these tips:

- If the blower jams, turn it off.
- Keep your hands away from the moving parts.
- Be aware of the carbon monoxide risk of running a snow blower in an enclosed space.
- Add fuel outdoors, before starting, and never add fuel when it is running.
- Never leave it unattended when it is running.

*Source: National Safety Council*



### “Don’t Cut the Power Lines!”

#### David Raak, Age 7 ½

David Raak cautions readers to be careful when working around power lines. Thank you for your picture, David! David’s parents are Nathaniel and Katie Raak, members of Central Electric.

Kids, send your drawing with an electrical safety tip to your local electric cooperative (address found on Page 3). If your poster is published, you’ll receive a prize. All entries must include your name, age, mailing address and the names of your parents. Colored drawings are encouraged.

# Crockpot GREATNESS

## CROCKPOT CORN

### Ingredients:

3 16-oz. packages frozen corn  
8 oz. cream cheese  
1/2 cup (1 stick) butter  
2 tbsps. sugar  
2 tbsps. water

### Method

Place corn in crockpot. Cut cream cheese and butter into small cubes. Add cream cheese, butter, sugar and water to corn. Stir. Cook on high for 45 minutes. Stir. Turn to low and cook for three more hours, stirring occasionally.

**Elaine Rieck**  
Harrisburg, S.D.

## CROCKPOT BAKED BEANS

### Ingredients:

2 cans black beans  
2 cans red beans (drained)  
2 cans great northern  
1 can baked beans with brown sugar  
1 lb. diced ham  
1 heaping tsp. mustard (regular)  
2 full tbsps. ketchup  
Garlic powder (optional)  
1 small onion (chopped)

### Method

Mix all ingredients in crockpot except ham. Cook 2 hours on high. Mix in ham and cook another hour on high. Enjoy!

**Rose Tucker**  
Hot Springs, S.D.

## CHICKEN FIESTA SLOW COOKER RECIPE

### Ingredients:

2 lbs. boneless skinless chicken breasts  
1 package slow cooker fiesta chicken seasoning mix  
2 cans (14 1/2 oz. each) diced tomatoes, undrained  
1 can (15 3/4 oz.) whole kernel corn, drained  
1 can (15 oz.) black beans, drained and rinsed

### Method

Place chicken in slow cooker. Mix seasoning, tomatoes, corn and beans until blended. Pour over chicken. Cover. Cook eight hours on LOW or four hours on HIGH. Remove chicken from slow cooker. Shred chicken, using two forks. Return chicken to slow cooker; mix well. Serve over cooked rice with assorted toppings, if desired.

**McCormick.com**

Please send your favorite recipes to your local electric cooperative (address found on Page 3). Each recipe printed will be entered into a drawing for a prize in December 2024. All entries must include your name, mailing address, phone number and cooperative name.



# Be prepared for winter storms

When winter temperatures drop and storms hit, it can be challenging to stay safe and warm. Winter storm severity varies depending on where you live, but nearly all Americans are affected by extreme winter storms at some point. West River Electric cares about your safety, and we want you to be prepared. 1130600

Heavy snow and ice can lead to downed power lines, leaving co-op members without power. During extremely low temperatures, this can be dangerous. During a power outage, our crews will continue to work as quickly and safely as possible to restore power, but there are a few things you can do to prepare yourself.

- **Stay warm** – Plan to use a safe alternate heating source, such as a fireplace or wood-burning stove during a power outage. These are great options to keep you and your loved ones warm, but exercise caution when using, and never leave the heating source unattended. If you are using gasoline-, propane- or natural gas-burning devices to stay warm, never use them indoors. Remember that fuel- and wood-burning sources of heat should always be

properly ventilated. Always read the manufacturer's directions before using.

- **Stay fed** – The CDC recommends having several days' supply of food that does not need to be cooked handy. Crackers, cereal, canned goods and bread are good options. Five gallons of water per person should also be available in the event of an extended power outage.
- **Stay safe** – When an outage occurs, it usually means power lines are down. It is best not to travel during winter storms, but if you must, bring a survival kit along, and do not travel alone. If you encounter downed lines, always assume they are live. Stay as far away from the downed lines as possible and report the situation to our office by calling 605-279-2135 or 605-393-1500 if possible.

Winter weather can be unpredictable and dangerous, and planning ahead can often be the difference between life and death. West River Electric is ready for what Mother Nature has in store, and we want you to be ready, too. For more winter safety tips, visit [www.ready.gov/winter-weather](http://www.ready.gov/winter-weather).



**West River Electric  
Association, Inc.**

Your Touchstone Energy® Cooperative 

*"Powering You For A Brighter Future"*

# The Final Round of SCHOLARSHIPS AVAILABLE

Seniors or current college students! West River Electric's FINAL round of scholarships is available for application.

Applying is EASY and FREE! Scan the QR code to apply!

Deadline to apply is:



## January 29, 2025.

*\*Students parents or students, must be members of WREA*

PLANNING AHEAD



An aerial view of the Pioneer Generation Station Phase IV near Williston, N.D. Photo submitted by Basin Electric Power Cooperative.

# FORECASTING THE FUTURE

## Basin Electric's Vision for Reliable Energy

**Frank Turner**

frank.turner@sdrea.coop

Keeping the lights on in a dynamic world isn't as simple as flipping a switch. It requires a forward-thinking approach, almost like gazing into a crystal ball, to anticipate future energy demand. Energy infrastructure projects begin long before the first shovel breaks ground, and it's a challenge that Basin Electric Power Cooperative confronts every day to ensure consistent and

reliable power amid an ever-changing landscape of new technologies and growing membership.

A new plant or transmission line can take years of planning and coordination by Basin Electric and its member cooperatives. The process is similar to predicting the weather; it all begins with a forecast to determine what energy demand is brewing on the horizon.

Basin Electric works with the members and other stakeholders to

develop highly accurate load forecasts. Those load forecasts are then compared against our existing resource portfolio. If any gaps are identified, resource alternatives are identified and reviewed against each other to arrive at the best resource portfolio outcome.

"Once a need for a new generation project or transmission project has been identified, Basin Electric assembles a project team," explained Matt Ehrman, vice president of engineering and construction at Basin Electric.

"Developing and defining project scope is vital to project success as it's really the foundation for the project," Ehrman continued. "Good upfront planning minimizes project execution

risks later, so Basin places a lot of emphasis on the development work that happens before any detailed engineering design can begin.”

Basin Electric is currently undertaking one of its largest single-site electric generation projects in the last 40 years near Williston, North Dakota, known as Pioneer Generation Station Phase IV. Once completed, this project will add 580 megawatts of natural gas generation capacity to Basin Electric’s energy portfolio. Although the project broke ground in March 2023, planning for the project began in 2021, standing as a testament to the cooperative’s long-term mindset and commitment to meeting its load forecast.

So what goes into the planning of such a major project? Ehrman says everything from identifying project objectives to permitting and contracting strategies to engineering studies all take place within the years leading up to new infrastructure.

“In the case of a generation project, the project site, fuel, water, and transmission sources are identified during the project development phase,” Ehrman said. “After the development phase is complete, the more detailed engineering design work can begin. This is when the engineers really begin to dig into the details of how to arrange and interconnect all of the many different types of equipment



The first gas turbine delivery for Pioneer Generation Station Phase IV. Photo submitted by Basin Electric Power Cooperative.

required for a given project. Eventually, those design details are used to develop construction specifications, contractors are selected and construction begins.”

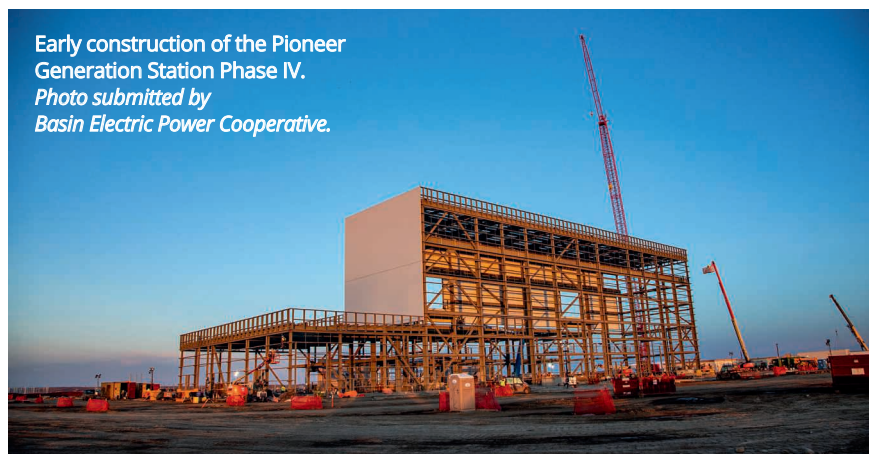
Beyond the demanding complexity of the project itself, Basin Electric’s project team must also navigate regulatory matters and policy. While many projects share similarities, no two are identical when navigating federal, state, and local permitting requirements.

“Large generation and transmission projects can take years to permit, and the permitting duration depends on the project,” Ehrman said. “Basin’s

teams have successfully permitted and executed many projects over the years and as a result have learned a lot about those processes in our service territory.”

Slated to be operational in 2025, Pioneer Generation Station Phase IV will come on board during a time when electricity demand is increasing significantly. The completion of the project will expand Basin Electric’s resource portfolio, which uses a vast diversity of generation resources to serve its member cooperatives. Even still, Ehrman said it still takes a massive effort to stay prepared for what the future may bring.

“Planning and building energy infrastructure is a massive team effort that involves teams from Basin and its membership,” he said. “These are complex projects, and there are challenges involved in all phases of the projects. Basin has extremely talented, dedicated and hard-working teams developing these projects that really enjoy working out all the technical and non-technical details while mitigating risks to achieve success and deliver the best possible outcome for the membership.”



Early construction of the Pioneer Generation Station Phase IV. Photo submitted by Basin Electric Power Cooperative.

# NRECA Youth Tour

Join students from across South Dakota for a **FREE, once-in-a-lifetime trip to Washington, D.C.**, sponsored by West River Electric! Scan the QR code below to learn more and fill out an application form!



SCAN TO APPLY FOR YOUTH TOUR!

deadline: December 30, 2024

Questions?  
Contact: 605-791-6564  
Amanda.haugen@westriver.coop



# 2025 June 15-21





## Celebrating 85 Years: West River Electric Enhances Wall Rodeo Grounds with Permanent Warm-Up Area

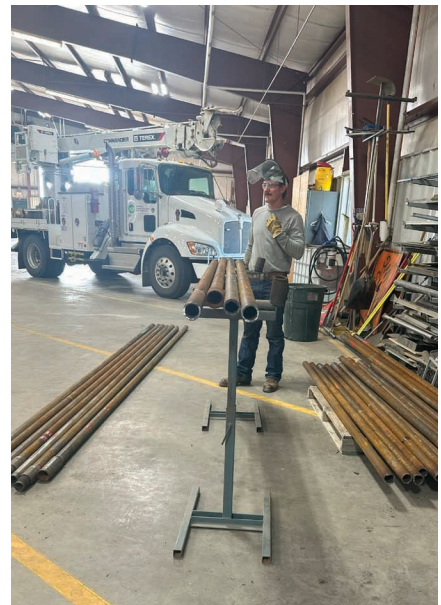
As West River Electric celebrates 85 years of service, we wanted to mark this milestone with a meaningful project for our community. This year, we partnered with the Wall Rodeo Grounds to create a permanent warm-up area for rodeo contestants. Previously, the warm-up space was only temporarily marked, often allowing spectators to drive through and park their vehicles in. By establishing a dedicated, permanent area, we've ensured that rodeo contestants have a safe and secure space to properly warm up their horses. West River Electric is proud to be your electric provider, and we look forward to serving you for another 85 years! 2719400



A look at the designated warm-up area.



Hanging the entrance gate.



Clint Stangle preparing the fencing for the project.



## LOOKING AHEAD

An aerial view of the Wild Springs Solar Project near New Underwood, S.D. Photo submitted by East River Electric

### Wind Energy Association Changes Name, Advocates For All Renewables

**Jacob Boyko**  
jacob.boyko@sdrea.coop

The South Dakota Wind Energy Association is getting a fresh coat of paint this year with a rebrand that will expand the association’s advocacy mission to include more forms of renewable energy.

As solar energy generation in the state increases with new and upcoming projects, expanding the association — now called the South Dakota Renewable Energy Association — to include other forms of renewable energy and battery storage was the clear way forward according to association president and Sioux Valley Energy Director Gary Fish.

“The association started out as being very wind oriented, and that’s our legacy,” Fish explained. “But we also have somewhat migrated to having an energy portfolio where wind coexists

with coal, natural gas and solar, and that was the driver behind changing our name.”

The change comes in the wake of South Dakota’s first large-scale solar farm near New Underwood, which began commercial operation in March 2024. Basin Electric Power Cooperative will purchase 114 megawatts of the 128-megawatt renewable project.

The association began with the

leadership of East River Electric Power Cooperative in the mid-2000s as the generation and transmission co-op looked for ways to develop wind generation in the state to serve its growing member utilities and bring economic development and job opportunities to the state.

“Wind energy was at that time starting to become a more viable utility-scale source of power generation,” said Chris Studer, chief member and public relations officer at East River Electric.



A look on the ground as crews prepare the Wild Springs Solar Project for power generation. Photo submitted by East River Electric

“East River led an effort to build an association of stakeholders in South Dakota that can help advocate for the wind industry.”

It’s a mission that’s propelled South Dakota to being the state with the third highest renewable energy makeup, with more than 54% of in-state power generated from renewable wind and solar resources.

“We’ve gone from essentially zero wind energy to more than 3,000 megawatts of installed capacity in the state,” Studer said. “We have far surpassed what our original goal was.”

In the South Dakota Wind Energy Association’s initial stages, the board was composed mostly of utilities and developers focused on studying potential economic benefits and the infrastructure needs that come with increasing generation.

“I think everyone knew we had a great wind resource, but the real issue was having additional transmission to get the power out,” Fish said. “Could we build

the towers? Yes. Could we get the power to market? That was the challenge.”

As the association successfully made the case for wind energy, the membership grew to include other G&Ts and investor-owned utilities, landowner groups, turbine manufacturers, servicing companies and others from the wind energy supply chain.

One of the first large-scale renewable energy wins for the South Dakota Wind Energy Association and rural electric cooperatives was the 2011 commissioning of the 172-megawatt Crow Lake Project north of White Lake, South Dakota. The association membership helped support the launch of South Dakota Wind Partners to bring local residents an opportunity to invest in and own several turbines in the project.

According to East River Electric, the program generated about \$16 million worth of local investment.

“It was a very unique and successful

project that the South Dakota Wind Energy Association had involvement in and advocated for,” Studer said. “The people that invested got tax equity benefits over time, and after about 10 years they sold it back to Basin Electric and got their investments back.”

Moving forward, the association will continue to advocate for a renewable energy-friendly business environment to propel South Dakota energy projects forward.

“South Dakota Renewable Energy Association is here to make sure our state’s tax policies are fair, that developers still want to come here and develop renewable energy projects, and that there’s a market for all of the supply chain that’s needed for wind energy and now for solar, as well as the necessary transmission,” Studer continued.

A new South Dakota Renewable Energy Association website and promotional material will debut within the next several months.



The Crow Lake Wind Project near White Lake, S.D., is the largest wind project owned solely by a cooperative in the United States. The \$363 million wind project went into operation in 2011.

*Photo submitted by East River Electric*

# EMPLOYEE SPOTLIGHT

SHINING THE LIGHT ON WEST RIVER ELECTRICS DEDICATED EMPLOYEES



**BYRON FRANK**  
METERING  
FOREMAN

**HOW LONG HAVE YOU BEEN WORKING WITH WEST RIVER ELECTRIC?**

I have been with West River Electric for 31 years.

**WHAT DOES YOUR JOB ENTAIL?**

Make sure the meter system is working properly, from the substation to the office. Anything to do with metering. Also inspection of substations, regulators and other things as needed.

**WHAT DO YOU LOVE MOST ABOUT WEST RIVER ELECTRIC?**

The opportunities that I have had over the years.

**WHAT IS YOUR FAVORITE MEMORY SINCE STARTING WORK AT WEST RIVER ELECTRIC?**

The storm jobs and getting the members electricity back on in the end, storm Atlas in particular. And the opportunity to go help build power lines in Haiti's.

**HOW WOULD YOU DESCRIBE WEST RIVER ELECTRIC IN THREE WORDS?**

Value to community.

**WHAT MOTIVATES YOU TO GET UP AND GO TO WORK EVERY DAY?**

Faith, Family, Friends



**TY COOPER**  
JOURNEYMAN  
LINEMAN

**HOW LONG HAVE YOU BEEN WORKING WITH WEST RIVER ELECTRIC?**

I have been with West River Electric for 2.5 years.

**WHAT DOES YOUR JOB ENTAIL?**

My job entails building new power lines and maintaining our older lines.

**WHAT DO YOU LOVE MOST ABOUT WEST RIVER ELECTRIC?**

What I love most about West River is the camaraderie with the team we have.

**WHAT IS YOUR FAVORITE MEMORY SINCE STARTING WORK AT WEST RIVER ELECTRIC?**

My favorite memory so far is working on the few storms we have had since I have been here.

**HOW WOULD YOU DESCRIBE WEST RIVER ELECTRIC IN THREE WORDS?**

Reliable, Safe, Awesome

**WHAT MOTIVATES YOU TO GET UP AND GO TO WORK EVERY DAY?**

I am motivated every day to come to work to provide the best service for our members possible and getting home to my wife safe every night.



Operation Roundup is a voluntary program that does just what the name implies. Each month we "round up" the electric bills of participating consumers to the next highest dollar. For example, a consumer's monthly bill of \$37.75 would automatically be rounded up to \$38.00, with the additional 25 cents going to the Operation Roundup fund. Donations are tax deductible, and consumers are sent a summary of yearly contributions each January.

## Where Does the Money Go?

All Operation Roundup donations are placed in a trust that is administered by an independent Board of Directors. This Board of Directors is made up of community leaders who serve on the Board on a voluntary basis. They are responsible in receiving the funds, evaluate all requests for funds, and decide how to distribute the funds.

## How is the Money Used?

The funds will be available to help any charitable projects for organizations, groups, families, or individuals within the service territory of West River Electric. No funds shall in any way be used to support any candidate for political office or for any political purpose.



**Applications open January 2, 2025, to request funds!**

## LOCATE YOUR ACCOUNT NUMBER

If you locate your account number anywhere in this issue of West River Electric's *Cooperative Connections*, you will be a winner. There will be five account numbers placed randomly throughout the publication. If you spot your account number and notify our office before the 10th of the next month, you will receive a \$10 credit on your next bill.

## WEST RIVER ELECTRIC OFFICE HOURS

### RAPID CITY OFFICE

3250 E Hwy 44, Rapid City, SD  
Monday-Friday 7 a.m. to 5 p.m.  
605-393-1500

### WALL OFFICE

1200 W 4th Ave, Wall, SD  
Monday-Friday 7 a.m. to 5 p.m.  
605-279-2135

A night depository is available at both offices for your convenience.

## SERVICE AND BILLING QUESTIONS?

Contact 605-279-2135 or 605-393-1500 during office hours. E-mail us at [info@westriver.coop](mailto:info@westriver.coop) for questions on your account.

## OUTAGE OR EMERGENCY?

Contact 605-279-2135 or 605-393-1500 in the event of an outage or other emergency. Our calls are answered 24/7.

## REGISTER TO WIN!

Bring this coupon and mailing label to the Touchstone Energy® Cooperatives booth at Black Hills Stock Show & Rodeo to win a Blackstone electric grill!

Your Phone Number: \_\_\_\_\_

Your E-mail Address: \_\_\_\_\_



**JAN. 11**  
**Snow Queen Coronation**  
7 p.m.  
Aberdeen Civic Theater  
Aberdeen, SD  
SDSnowQueen.com

Photo courtesy of South Dakota Snow Queen Festival

To have your event listed on this page, send complete information, including date, event, place and contact to your local electric cooperative. Include your name, address and daytime telephone number. Information must be submitted at least eight weeks prior to your event. Please call ahead to confirm date, time and location of event.

**DEC. 21**  
**Blue Christmas Service**  
Rapid Valley United Methodist  
4 p.m.  
5103 Longview Dr.  
Rapid City, SD

**DEC. 24**  
**Candlelight Christmas Eve Service**  
Rapid Valley United Methodist  
4 p.m.  
5103 Longview Dr.  
Rapid City, SD

**UNTIL DEC. 26**  
**Christmas at the Capitol**  
8 a.m.-10 p.m.  
Pierre, SD  
605-773-3178

**UNTIL DEC. 29**  
**Trees & Trains Exhibit at SD State Railroad Museum**  
Hill City, SD  
605-665-3636

**UNTIL DEC. 29**  
**(WEEKENDS)**  
**1880 Train Holiday Express (Spiked! 21+)**  
Hill City, SD  
605-574-2222  
1880train.com

**UNTIL DEC. 31**  
**Olde Tyme Christmas at participating businesses, Lane of Lights Viewing**  
Hill City, SD

**DEC. 31-JAN. 1**  
**New Year's Eve in Deadwood**  
Deadwood, SD  
800-999-1876

**JAN. 7-9**  
**Dakota Farm Show**  
Tue. & Wed. 9 a.m.-5 p.m.  
Thurs. 9 a.m.-3 p.m.  
USD DakotaDome  
Vermillion, SD

**JAN. 11**  
**Coats for Kids Bowling Tournament**  
Meadowood Lanes  
Rapid City, SD  
605-393-2081

**JAN. 15**  
**46th Ranchers Workshop**  
9 a.m.-3 p.m.  
Community Events Center  
White River, SD  
605-259-3252 ext. 3

**JAN. 18**  
**Breakin' the Winter Blues Chili Cookoff**  
Main Street  
Hill City, SD

**JAN. 26**  
**Supper Supper Fundraiser**  
Rapid Valley United Methodist  
5:30-7:30 p.m.  
Tickets \$6  
5103 Longview Dr.  
Rapid City, SD

**JAN. 31-FEB. 8**  
**Black Hills Stock Show & Rodeo**  
Central States Fairground  
Rapid City, SD  
605-355-3861

**FEB. 14-17**  
**11th Annual Frost Fest**  
9 a.m.-3 p.m.  
Brookings, SD  
605-692-7444

**FEB. 22**  
**Bellator Titans Charter Casino Night Fundraiser**  
6-11 p.m.  
316 2nd St.  
Aberdeen, SD

**Note: Please make sure to call ahead to verify the event is still being held.**